

EK-Loop D5 Pump Mounting Kit



This product is intended for installation only by expert users. Please consult with a qualified technician for installation. Improper installation may result in damage to your equipment. EK Water Blocks assumes no liability whatsoever, expressed or implied, for the use of these products, or their installation. The following instructions are subject to change without notice. Please visit our website at www.ekwb.com for updates. Before installation of this product, please read the important notice, disclosure, and warranty conditions that are printed on the back of the box.

Before you start using this product, please follow these basic guidelines:

Please carefully read the manual before beginning the installation process.

The use of corrosion-inhibiting coolants is always recommended for liquid cooling systems, and mandatory for nickel-plated water blocks.

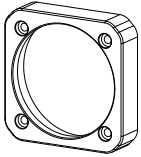
Do not use pure distilled water! For best results, EK recommends the use of EK-Cryo Fuel coolants.

Make sure to thoroughly bleed air out of your water block, or you will not reach optimal performance.

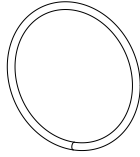
TABLE OF CONTENTS

BOX CONTENTS	4
COMPATIBILITY	4
REPLACING THE PUMP	5
CONNECTING THE PUMP	7
SUPPORT AND SERVICE	8
SOCIAL MEDIA	8

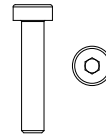
BOX CONTENTS



D5 Pump holder (1 pc)



D5 Pump O-ring (1 pc)



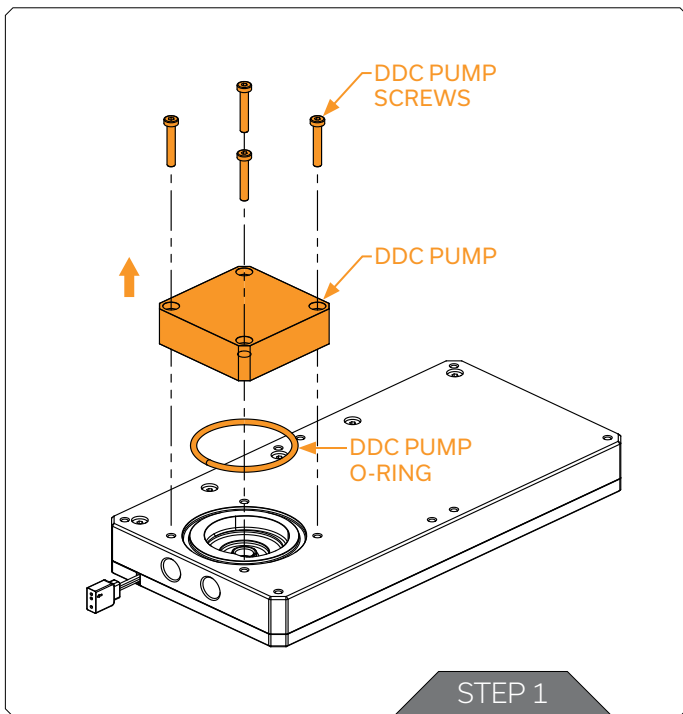
D5 Pump mounting screws
M4x20 DIN7984 (4 pcs)

COMPATIBILITY

The upgrade kit is compatible with the following products:

- 3831109905630 EK-Mana G2 PC-O11D EVO DDC D-RGB Distribution Plate
- 3831109851159 EK-Quantum Kinetic FLT 80 DDC PWM D-RGB - Plexi
- 3831109819753 EK-Quantum Kinetic FLT 120 DDC PWM D-RGB - Plexi
- 3831109819760 EK-Quantum Kinetic FLT 240 DDC PWM D-RGB - Plexi
- 3831109819777 EK-Quantum Kinetic FLT 360 DDC PWM D-RGB - Plexi

REPLACING THE PUMP



Important!

This kit does NOT contain a D5 pump. EK suggests the **EK-Loop D5 G3 PWM Motor**, which is the most modern version of the D5 pump with a SATA power connector. The pump can be purchased in EK Shop: <https://www.ekwb.com/shop/ek-loop-d5-g3-pwm-motor>

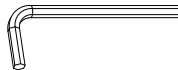
Before installation, make sure that the reservoir is completely free of coolant and dry.

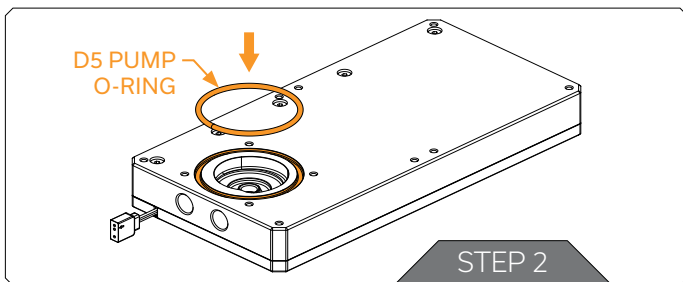
STEP 1

To install the D5 pump, the previously installed DDC pump must be removed. Using the Allen Key 2.5 mm, unscrew the DDC Pump screws. Detach the DDC pump and DDC Pump O-ring.

For this step, you will need:

Allen Key 2.5mm

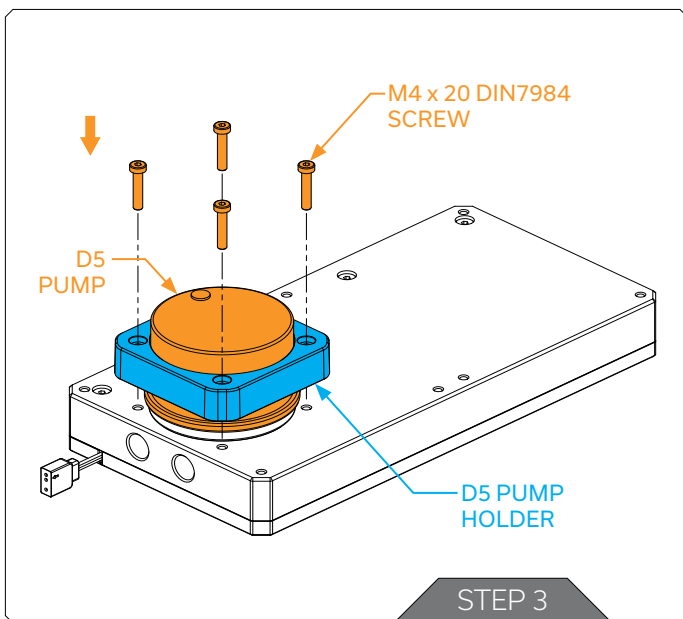
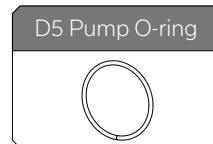




STEP 2

Place the provided D5 Pump O-Ring into the marked groove.

For this step, you will need:

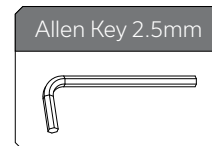
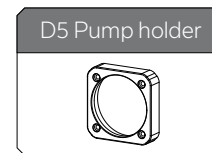
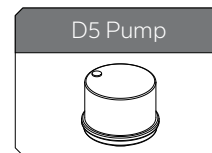
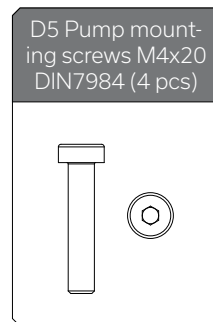


STEP 3

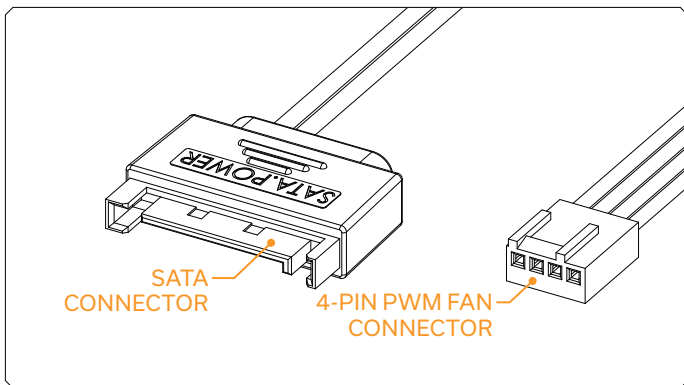
Place the D5 Pump and D5 Pump holder in place and secure it with provided M4 x 20 DIN7984 Screws. **Do not use excessive force!**
Max Torque: 0.6Nm

A leakage test is mandatory after fixing the screws. EK recommends using the EK-Loop Leak Tester for the test. More information on leak testing can be found here:
<https://www.ekwb.com/shop/ek-loop-leak-tester-flex>

For this step, you will need:



CONNECTING THE PUMP



The EK-D5 PWM pump has two connectors.

- 1. SATA Connector:** It must be connected directly to your PSU at all times as it is used to power the pump.
- 2. 4-pin PWM fan:** It can be connected to your motherboard's CPU_Fan or designated water pump header. It can also be connected to a controller. This cable is used to control and report the rotational speed of the pump. If it's not connected, the pump will run at maximum speed (100% PWM).

SUPPORT AND SERVICE

In case you need assistance, please contact:
<https://www.ekwb.com/customer-support/>

EKWB d.o.o.
Pod lipami 18
1218 Komenda
Slovenia - EU


SOCIAL MEDIA

 EKWaterBlocks

 @EKWaterBlocks

 ekwaterblocks

 EKWBofficial

 ekwaterblocks

