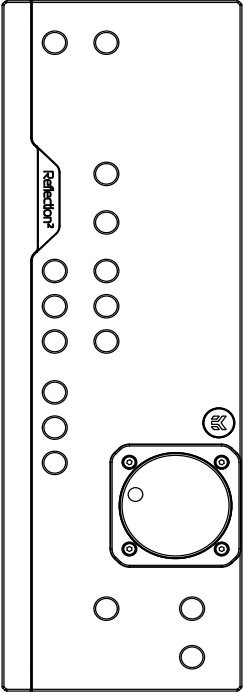


# EK-Quantum Reflection<sup>2</sup> ROG Hyperion D5 PWM D-RGB

DISTRIBUTION PLATE



The installation of the product is intended to be undertaken by an adequately trained and experienced person. You are installing the product at your own risk. If you are not sufficiently trained or experienced or feel unsure about the installation procedure, please refrain from installing the product yourself and contact our tech support for assistance. We disclaim our liability for any damages to the product and incidental, consequential, or indirect damages incurred due to improper or inappropriate installation.

Before you start using this product please follow these basic guidelines:

**Read this manual carefully before beginning the installation process.**

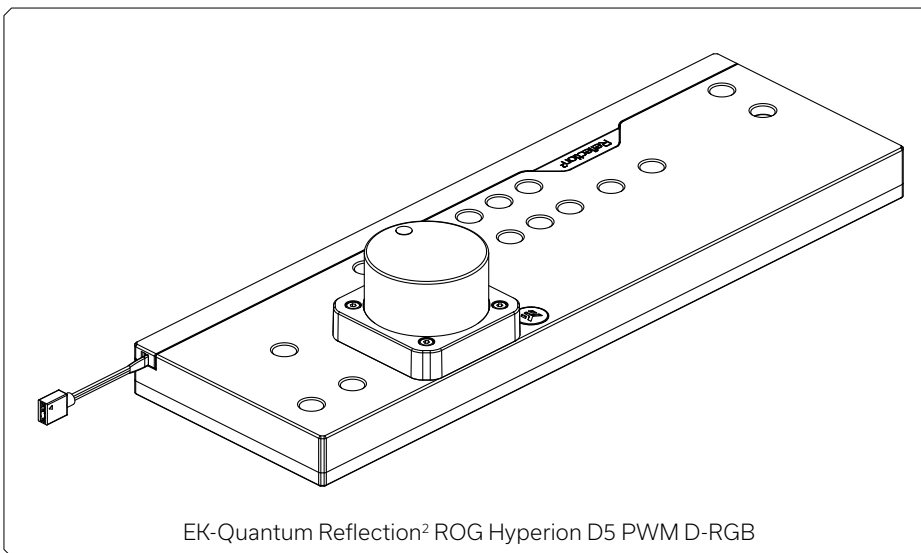
**The EK-fittings require only a tiny amount of force to screw them firmly in place since the rubber O-ring gaskets ensure the liquid seal.**

**Corrosion-inhibiting purpose-made coolants are always recommended for any liquid cooling system. EK recommends EK-CryoFuel coolants for worry-free usage.**

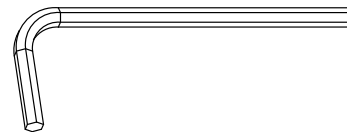
# TABLE OF CONTENT

<b>BOX CONTENTS</b>	<b>4</b>
<b>DISTRIBUTION PLATE DIMENSIONS</b>	<b>5</b>
<b>TECHNICAL SPECIFICATIONS AND PRODUCT PARTS</b>	<b>6</b>
<b>PREPARING THE CHASSIS</b>	<b>7</b>
<b>INSTALLING THE DISTRIBUTION PLATE</b>	<b>8</b>
<b>RECOMMENDED DISTRIBUTION PLATE CONFIGURATIONS</b>	<b>9</b>
<b>FLOW DIAGRAM</b>	<b>11</b>
<b>CONNECTING THE D-RGB LED STRIP</b>	<b>12</b>
<b>CONNECTING THE PUMP</b>	<b>12</b>
<b>TESTING THE LOOP</b>	<b>13</b>
<b>SUPPORT AND SERVICE</b>	<b>14</b>
<b>SOCIAL MEDIA</b>	<b>14</b>

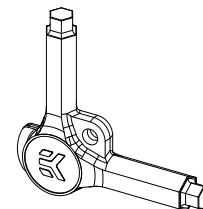
## BOX CONTENTS



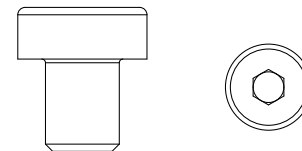
**Mounting mechanism - Hyperion D5**  
PWM D-RGB; EAN: 106748



Allen Key 2.5 mm (1 pc)

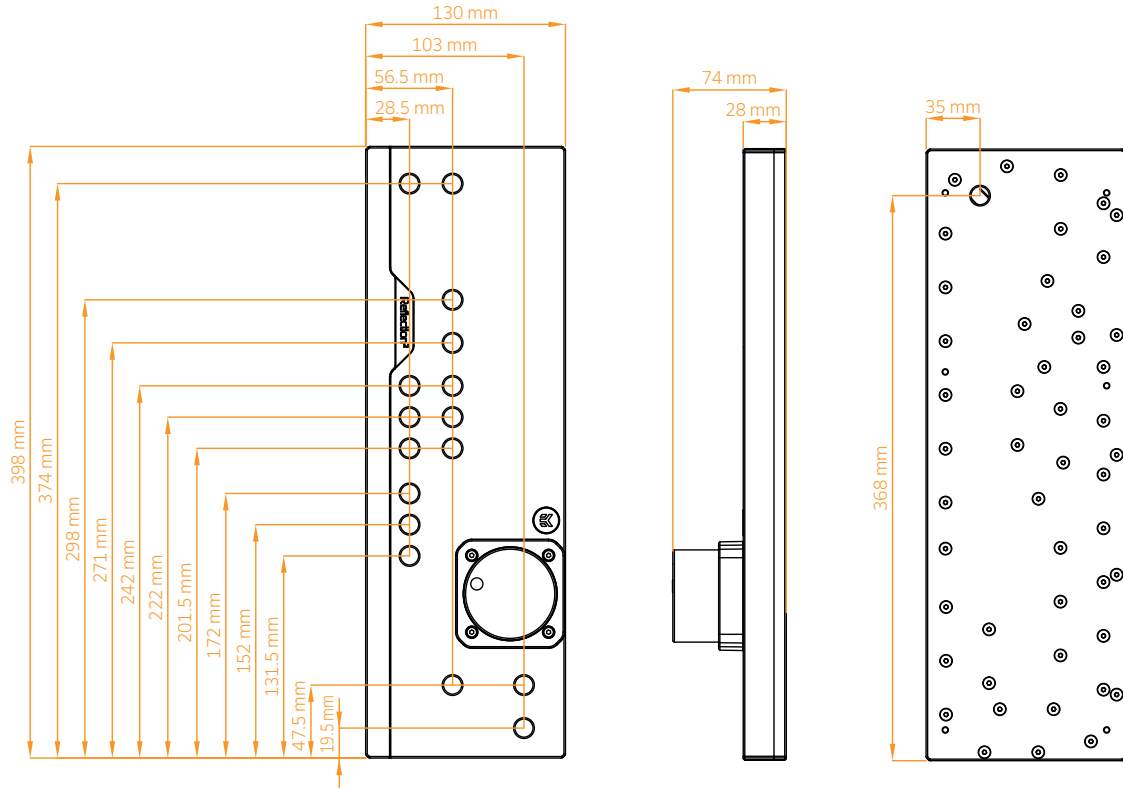


EK-Loop Multi Allen Key (1 pc)



Screw M4 x 5 DIN7984 (7 pcs)

# DISTRIBUTION PLATE DIMENSIONS

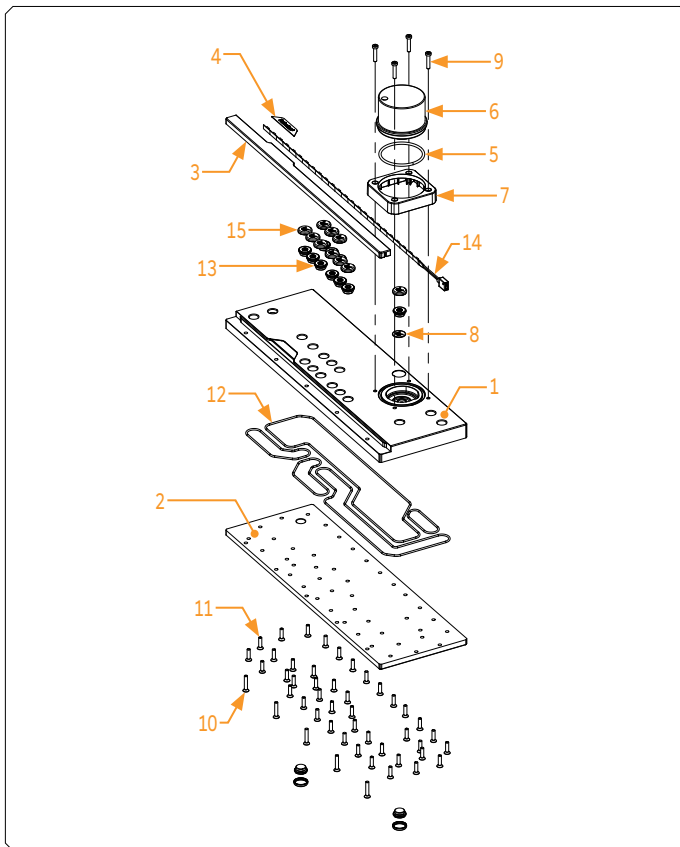


## TECHNICAL SPECIFICATIONS AND PRODUCT PARTS

### Technical Specification:

- Dimensions with the attached pump (W x D x H): 130 x 28 x 398 mm
- Reservoir volume: ~283 ml
- D-RGB LED count: 23
- D-RGB cable length: 500mm
- D-RGB connector standard 3-pin (+5V, Data, Blocked, Ground)

Position	EAN	Description	Quantity
1	106667	Bottom plate (Plexi)	1
2	106668	Top plate (Plexi)	1
3	106671	Led cover (Black e.)	1
4	104599	Mylar sticker	1
5	5154	OR 52 x 3 mm	1
6	3831109837597	EK-D5 PWM (12V SATA) Pump	1
7	105913	Pump holder	1
8	100663	EK - Badge	1
9	8311	Screw M4 x 20 DIN7984	4
10	8251	Screw M4 x 22 DIN7991	5
11	8312	Screw M4 x 16 DIN7991	43
12	106672	OR Set	1
13	102639	EK PLUG G1/4	12
14	100815	LED D-RGB strip 500/400 mm	1
15	3831109834282	Plug cover	12



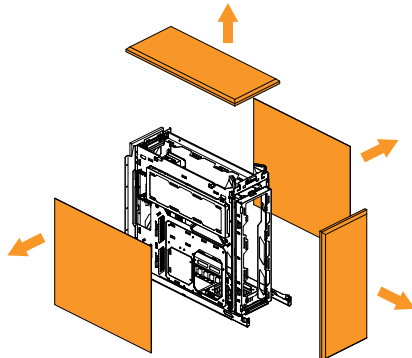
## PREPARING THE CHASSIS



Before installing the distribution plate, carefully read the PC case manual.

### STEP 1

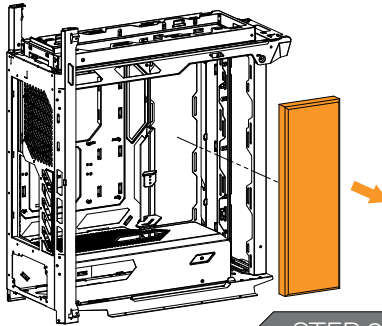
First, remove the PC case's back, top, and side panels.



STEP 1

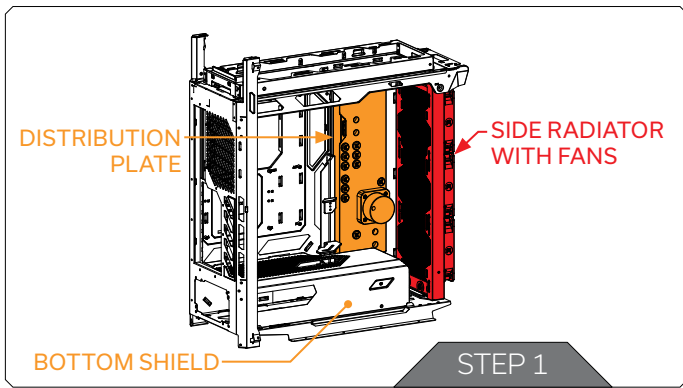
### STEP 2

After removing the panels, the inner radiator mounting bracket cover also needs to be detached.



STEP 2

## INSTALLING THE DISTRIBUTION PLATE

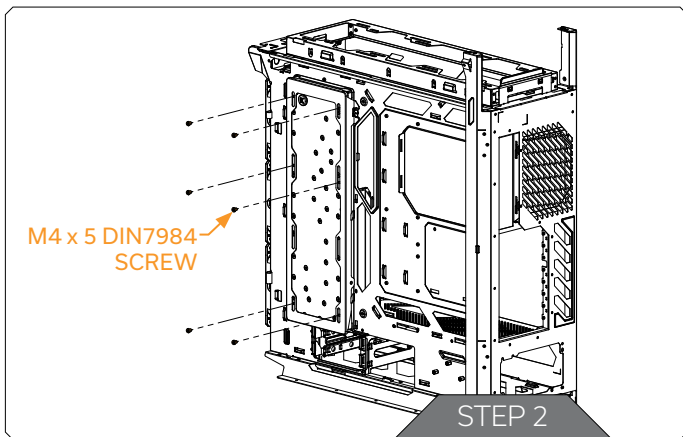


### STEP 1



Before installing the distribution plate into the PC Chassis, it is recommended to install the side radiator with fans. Otherwise, placing the distribution plate into the final position is harder.

Carefully insert the distribution plate into the PC Chassis. The bottom shield can also be removed before placing the distribution plate.

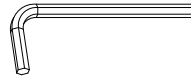


### STEP 2

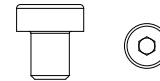
Secure the distribution plate from the backside with six (6) M4 x 5 DIN7984 Screws and Allen Key 2.5 mm.

For this step you will need:

Allen Key 2.5 mm (1 pc)

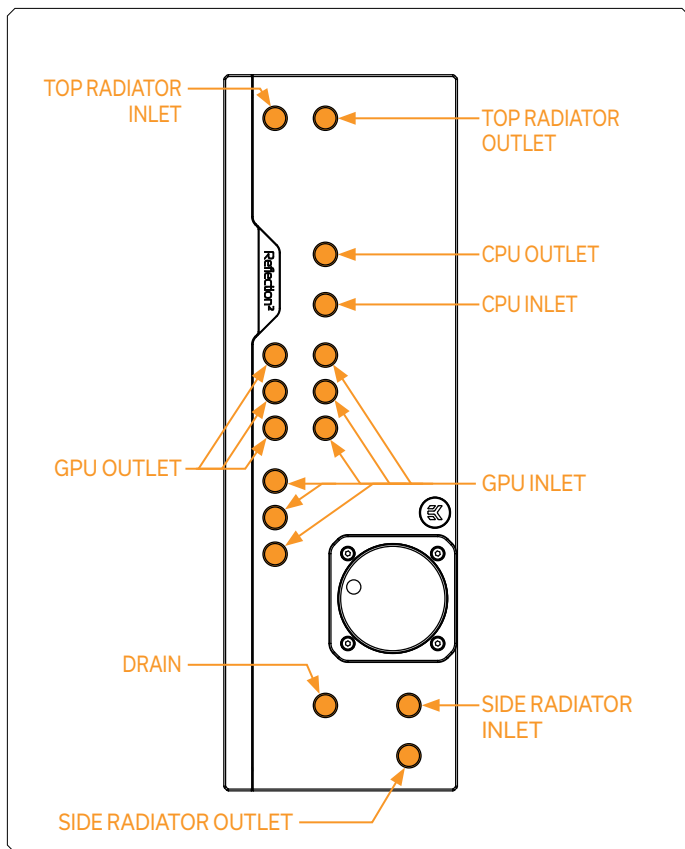


M4x5 DIN7984 Screw (6 pcs)





## RECOMMENDED DISTRIBUTION PLATE CONFIGURATIONS



To complete your loop, all ports must be used as marked in the image.

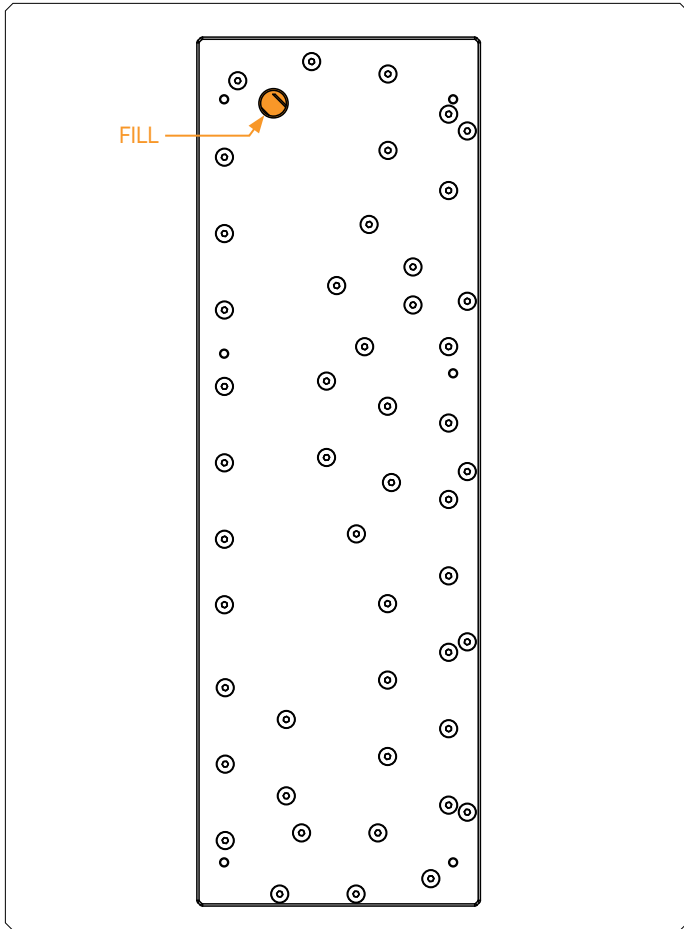
All remaining unused ports must be closed with supplied plugs, using the EK-Loop Multi Allen Key.



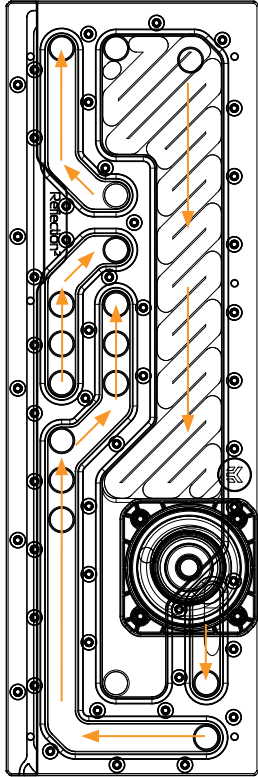
If one of the prescribed components will not be installed (ie. side radiator or GPU block) then one INLET and one OUTLET port must still be joined together in order for this distribution plate to function!



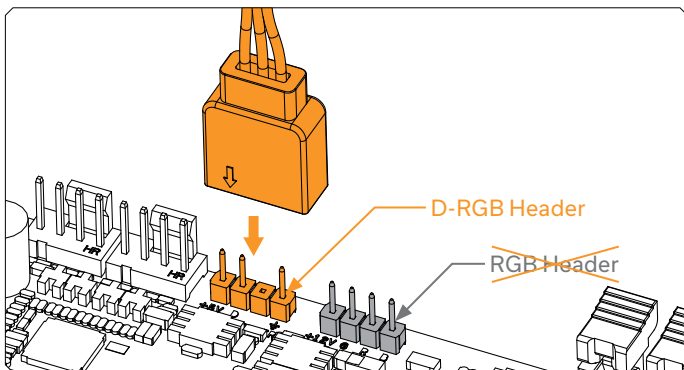
Only one INLET and one OUTLET port for the GPU connection can be used, while all other INLET and OUTLET GPU ports must be closed with G1/4 plugs.



# FLOW DIAGRAM

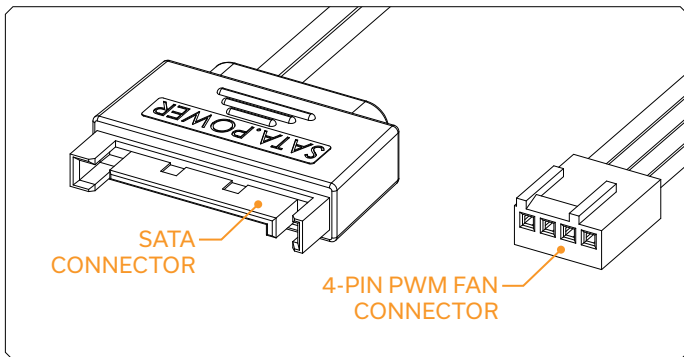


## CONNECTING THE D-RGB LED STRIP



Plug the 3-pin connector of the distribution plate D-RGB LED light to the D-RGB HEADER on the motherboard. The LED will work if the pin layout on the header is as follows: **+5V, Digital, Empty, Ground.**

## CONNECTING THE PUMP



The EK-D5 PWM pump has two connectors.

- 1. SATA Connector:** It must be connected directly to your PSU at all times as it is used to power the pump.
- 2. 4-pin PWM fan:** It can be connected to your motherboard's CPU\_ Fan or designated water pump header. It can also be connected to a controller. This cable is used to control and report the rotational speed of the pump. If it's not connected, the pump will run at maximum speed (100% PWM).

## TESTING THE LOOP

To make sure the installation of EK components was successful, we recommend you perform a leak test for 24 hours.

When your loop is complete and filled with coolant, connect the pump to a PSU outside of your system. Do not connect power to any of the other components. Turn on the PSU and let the pump run continuously. It is normal for the coolant level to drop during this process as air collects in the distribution plate.

Inspect all parts of the loop, and in the eventuality that coolant leaks, fix the issue and repeat the testing process. Ensure that all hardware is dry before the system is powered on in order to prevent any damage.

## SUPPORT AND SERVICE

In case you need assistance or wish to order spare parts or a new mounting mechanism, please contact:

**<https://www.ekwb.com/customer-support/>**

For spare parts orders, refer to the page with "TECHNICAL SPECIFICATIONS AND PRODUCT PARTS" where you can find the EAN number of each part you might need.

Include the EAN number with quantity in your request. Mounting Mechanism EAN can be found under "BOX CONTENTS"

Thermal pads are readily available in the EK shop


## SOCIAL MEDIA

 EKWaterBlocks

 @EKWaterBlocks

 ekwaterblocks

 EKWBofficial

 ekwaterblocks

