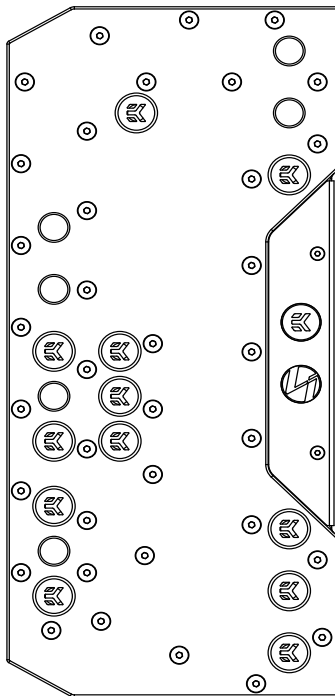


EK-Mana G2 PC-011D EVO DDC D-RGB

DISTRIBUTION PLATE



Please note the installation of the product is intended to be undertaken by an adequately trained and experienced person. You are installing the product at your own risk. If you are not properly trained or experienced or feel unsure about the installation procedure, please refrain from installing the product yourself and contact our tech support for assistance. We disclaim our liability for any damages to the product as well as incidental, consequential, or indirect damages incurred due to improper or inappropriate installation.

Before you start using this product please follow these basic guidelines:

Please carefully read the manual before beginning with the installation process!

The EK Fittings require only a small amount of force to screw them firmly in place since the liquid seal is ensured by the rubber O-ring gaskets.

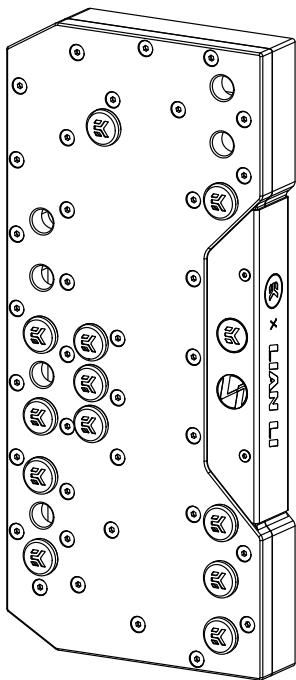
The use of corrosion-inhibiting coolants is always recommended for any liquid cooling system.

EKWB recommends any of the EK Cryofuel for worry-free usage.

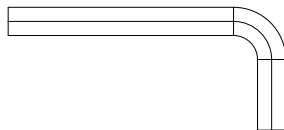
TABLE OF CONTENT

BOX CONTENTS	4
DISTRIBUTION PLATE DIMENSIONS	5
MOUNTING HOLES DIMENSIONS	6
TECHNICAL SPECIFICATIONS AND PRODUCT PARTS	7
PREPARING THE PC CASE	8
INSTALLING THE DISTRIBUTION PLATE	9
RECOMMENDED DISTRIBUTION PLATE CONFIGURATIONS	10
FLOW DIAGRAM	12
CONNECTING THE D-RGB LED STRIP	13
CONNECTING THE PUMP	13
TESTING THE LOOP	14
SUPPORT AND SERVICE	15
SOCIAL MEDIA	15

BOX CONTENTS



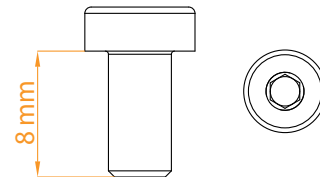
EK-Mana G2 PC-O11D EVO DDC
D-RGB Distribution Plate



Allen Key 6 mm (1 pc)

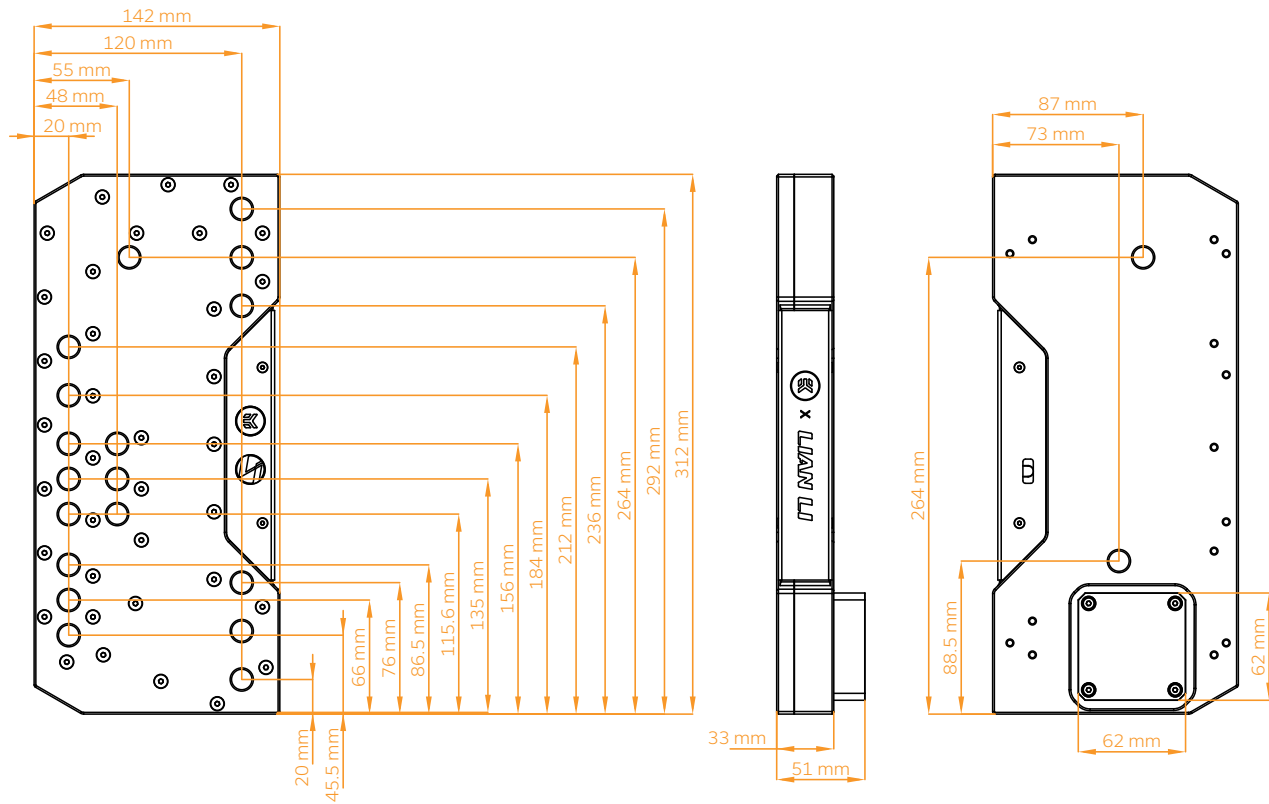


Allen Key 2.5 mm (1 pc)

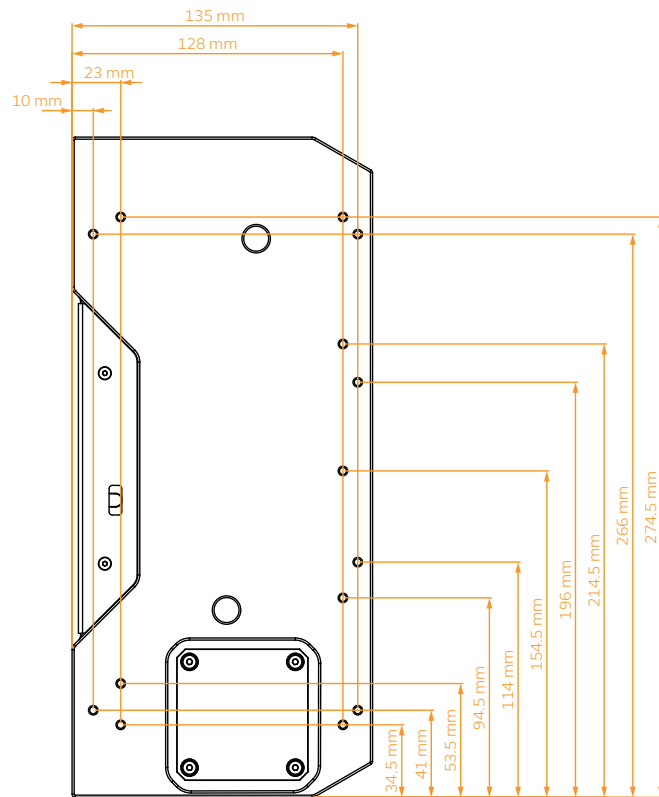


Screw M4 x 8 DIN7984 (16 pcs)

DISTRIBUTION PLATE DIMENSIONS



MOUNTING HOLES DIMENSIONS



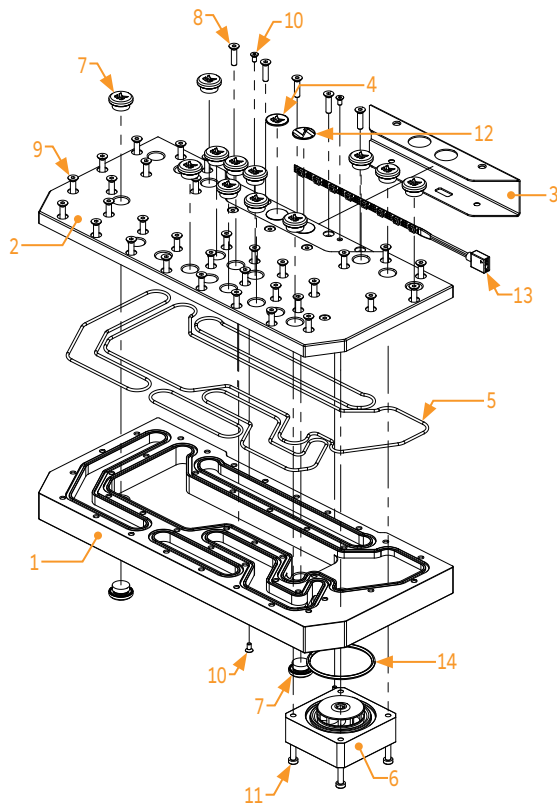
TECHNICAL SPECIFICATIONS AND PRODUCT PARTS

Technical Specification:

Dimensions with the attached pump (W x D x H): 312 x 50.9 x 142 mm

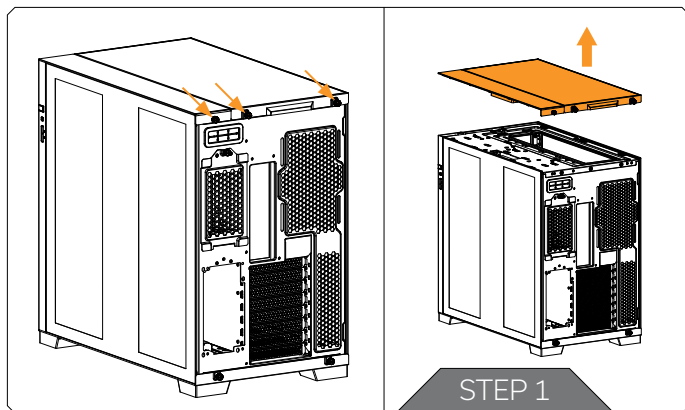
D-RGB cable length: 800mm

D-RGB connector standard 3-pin (+5V, Data, Blocked, Ground)



Position	EAN	Description	Quantity
1	104811	Plexi part (Bottom)	1
2	104810	Plexi part (Top)	1
3	104812	LED Cover	1
4	104510	EK-Badge	1
5	104813	OR Set	1
6	3831109837580	EK-DDC 4.2 PWM pump	1
7	3831109834282	Plug Cover	14
8	8312	Screw M4 x 16 DIN7991	5
9	9039	Screw M4 x 18 DIN7991	36
10	8472	Screw M3 x 6 DIN7991	4
11	100006	Screw M4 x 27 DIN7984	4
12	105023	Lian Li Badge	1
13	105679	LED D-RGB strip 500/130 mm	1
14	5220	OR 46 x 2.5 mm	1

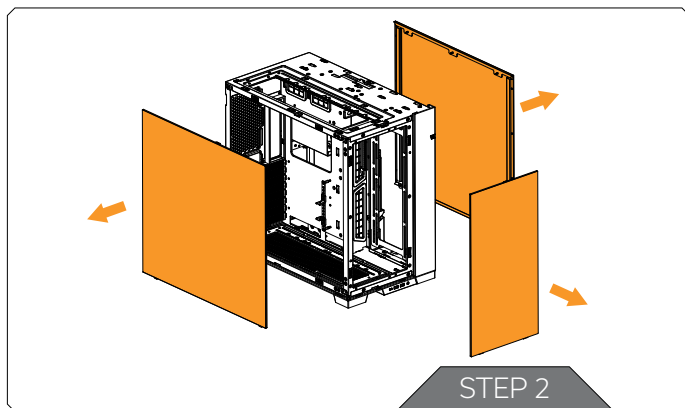
PREPARING THE PC CASE



STEP 1

Unscrew the factory provided screws and remove the top panels from the case.

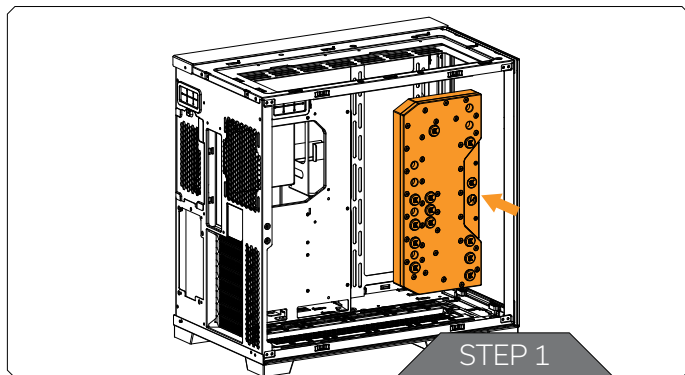
(On the photos, the Lian Li O11 Dynamic EVO PC Case is shown.)



STEP 2

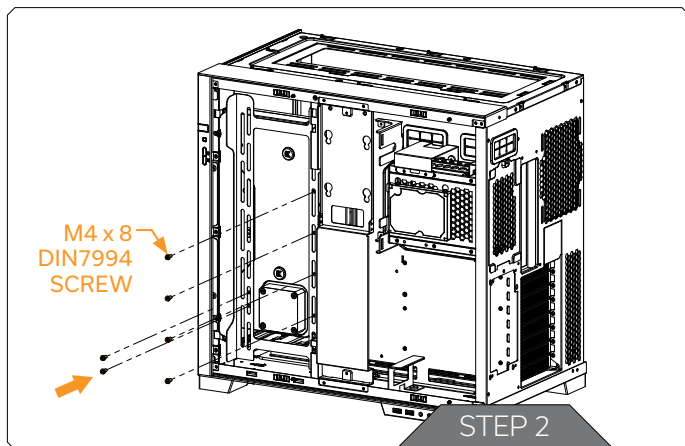
Remove both side panels and the front panel from the case.

INSTALLING THE DISTRIBUTION PLATE



STEP 1

Carefully place the distribution plate into the case and align the mounting holes. Be careful not to scratch the acrylic!



STEP 2

From the backside of the PC case, secure the distribution plate through the fan bracket using M4 x 8 DIN7994 screws.



The screws shouldn't be over-tightened to avoid cracking the acrylic.

EK recommends using the EK-Loop Torque Screwdriver - 0.6Nm:
<https://www.ekwb.com/shop/ek-loop-torque-screwdriver-0-6nm>

For this step you will need:

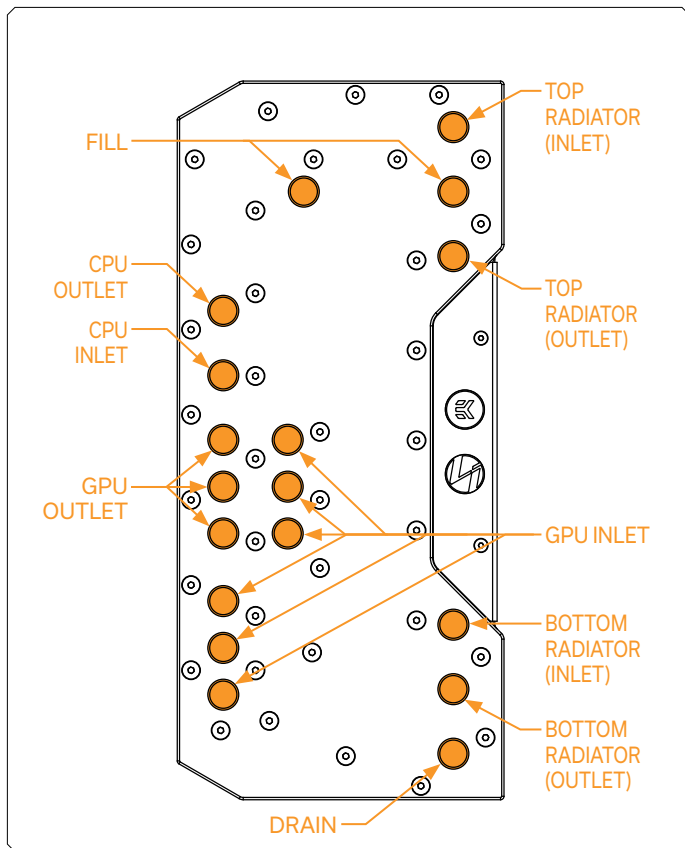
M4 x 8 DIN7984 Screws



Allen Key 2.5 mm



RECOMMENDED DISTRIBUTION PLATE CONFIGURATIONS



To complete your loop, all ports must be used as marked in the image.

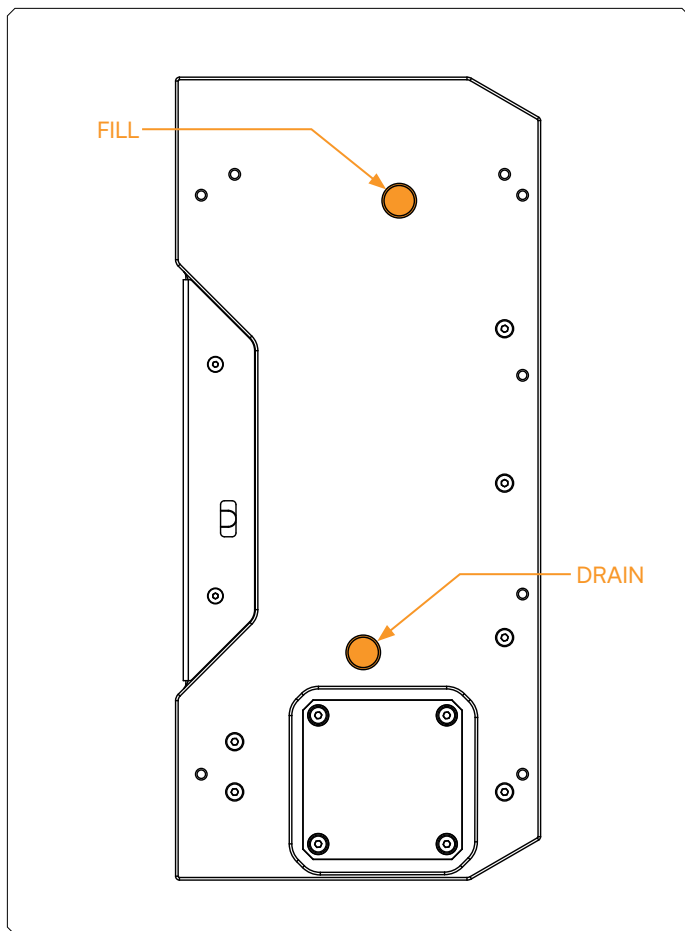
All remaining unused ports must be closed with supplied plugs, using the Allen Key 6 mm.



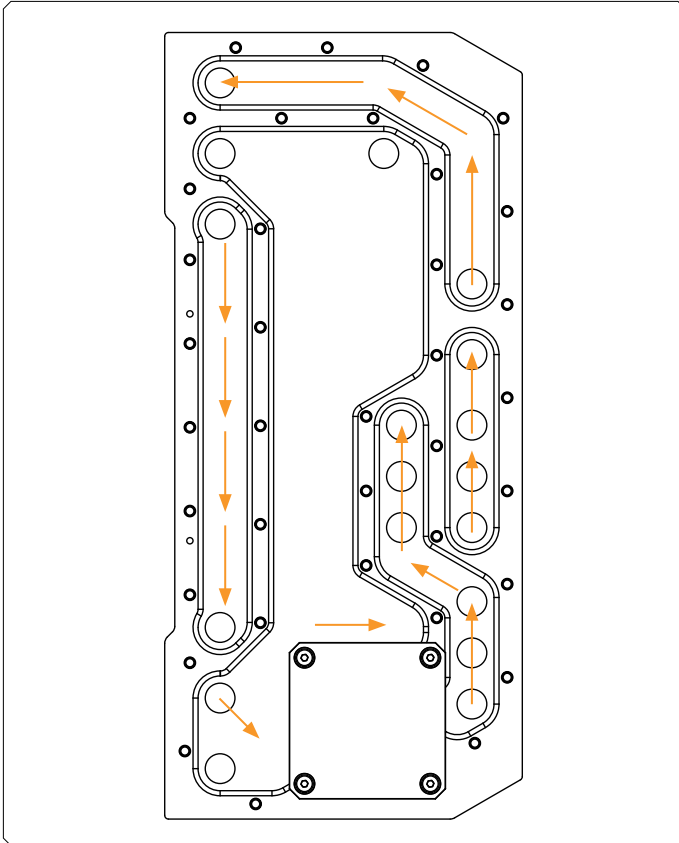
Only one INLET and one OUTLET port for the GPU connection can be used, while all other INLET and OUTLET GPU ports must be closed with G1/4 plugs.



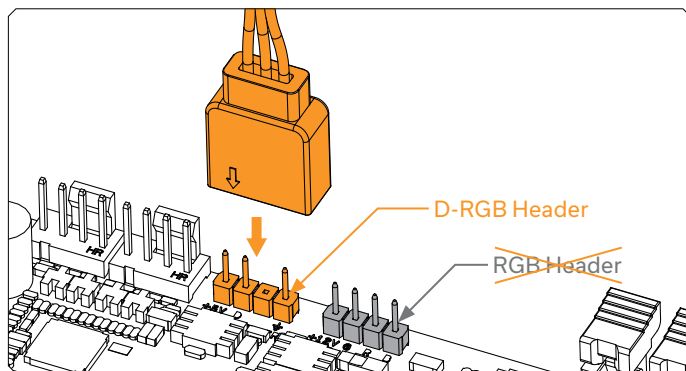
If one of the prescribed components will not be installed (eg. radiator or GPU water block) then one INLET and one OUTLET port still must be joined in order for this distribution plate to function!



FLOW DIAGRAM

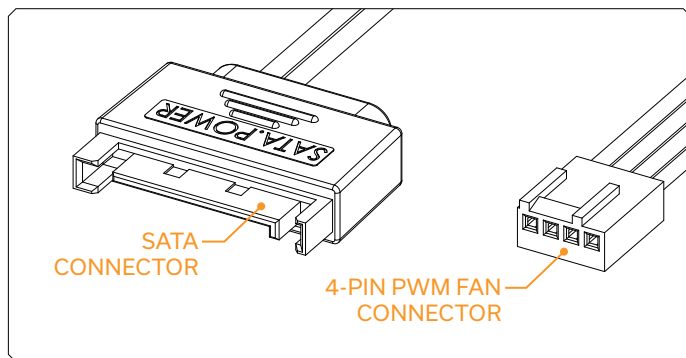


CONNECTING THE D-RGB LED STRIP



Plug the 3-pin connector of the distribution plate D-RGB LED light to the D-RGB HEADER on the motherboard. The LED will work if the pin layout on the header is as follows: **+5V, Digital, Empty, Ground.**

CONNECTING THE PUMP



The EK DDC PWM pump has two connectors.

- 1. SATA Connector:** It must be connected directly to your PSU at all times as it is used to power the pump.
- 2. 4-pin PWM Fan Connector:** It can be connected to your motherboard's CPU, fan, or designated water pump header. It can also be connected to a controller. This cable controls and reports the rotational speed of the pump. The pump will run at maximum speed (100% PWM) if not connected.

TESTING THE LOOP

To make sure the installation of EK components was successful, we recommend you perform a leak test for 24 hours.

When your loop is complete and filled with coolant, connect the pump to a PSU outside of your system. Do not connect power to any of the other components. Turn on the PSU and let the pump run continuously. It is normal for the coolant level to drop during this process as air collects in the distribution plate.

Inspect all parts of the loop, and in the eventuality that coolant leaks, fix the issue and repeat the testing process. Ensure that all hardware is dry before the system is powered on in order to prevent any damage.

SUPPORT AND SERVICE

In case you need assistance or wish to order spare parts or a new mounting mechanism, please contact:


<https://www.ekwb.com/customer-support/>

For spare parts orders, refer to the page with "TECHNICAL SPECIFICATIONS AND PRODUCT PARTS" where you can find the EAN number of each part you might need.


Include the EAN number with quantity in your request. Mounting Mechanism EAN can be found under "BOX CONTENTS"

Thermal pads are readily available in the EK shop


SOCIAL MEDIA

 EKWaterBlocks

 @EKWaterBlocks

 ekwaterblocks

 EKWBofficial

 ekwaterblocks

