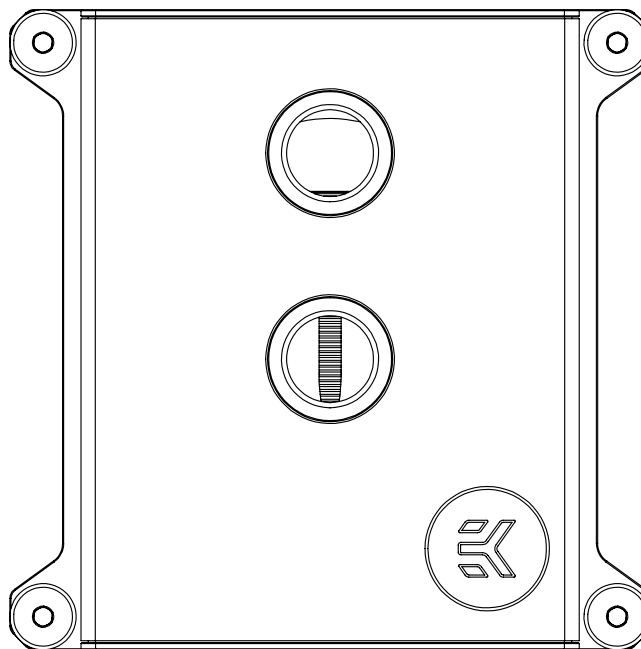


EK-Pro CPU Water Block LGA 1700

LGA 1700 NI + POM-C | LGA 1700 AL + POM-C



This product is intended for installation only by expert users. Please consult with a qualified technician for installation. Improper installation may result in damage to your equipment. EK Water Blocks assumes no liability whatsoever, expressed or implied, for the use of these products nor their installation. The following instructions are subject to change without notice. Please visit our website www.ekwb.com for updates. Before installing this product, please read the important notice, disclosure, and warranty conditions printed on the back of the box.

Before you start using this product, please follow these basic guidelines:

Please read the manual carefully before starting the installation process.

Please remove your graphics card from the computer to ensure the safest mounting process and prevent any possible damage to your GPU and/or graphics card circuit board (PCB).

The EK-HFB and EK-ACF type fittings require only a small amount of force to screw them firmly in place since the rubber O-ring gaskets ensure the liquid seal.

The use of corrosion inhibiting coolants is always recommended for any liquid cooling system.

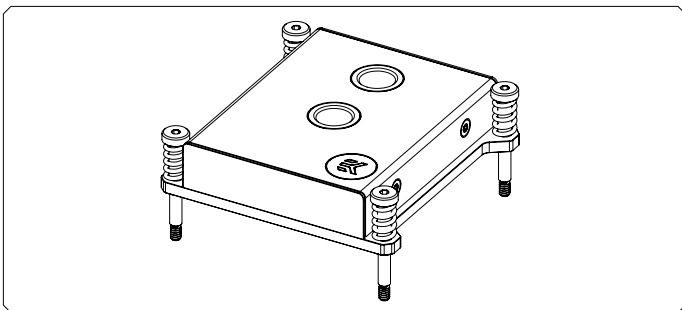
Do not use pure distilled water. For best results, EK recommends the use of EK-CryoFuel coolants.

Make sure to bleed the air from your water block thoroughly, or you will not reach optimal performance.

TABLE OF CONTENTS

GENERAL INFORMATION ON WATER BLOCK COMPATIBILITY	4
BOX CONTENTS	4
TECHNICAL SPECIFICATIONS AND PRODUCT PARTS	5
INSTALLING THE WATER BLOCK	6
CLEANING THE CPU	6
THERMAL COMPOUND APPLICATION	6
INSTALLING THE WATER BLOCK ASSEMBLY	7
INSTALLING THE FITTINGS	8
TESTING THE LOOP	9
SUPPORT AND SERVICE	10
SOCIAL MEDIA	10

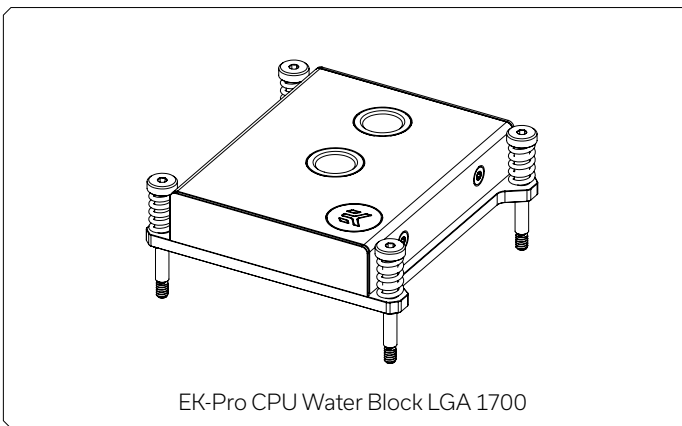
GENERAL INFORMATION ON WATER BLOCK COMPATIBILITY



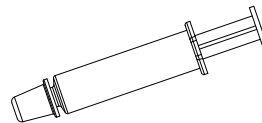
This CPU liquid cooling unit is pre-assembled for use with modern Intel server socket-type motherboards. By default (out of the box), this water block supports the following CPU sockets:

- Intel® Socket LGA 1700

BOX CONTENTS



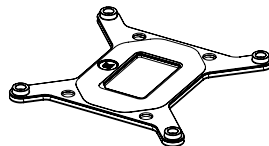
Mounting Mechanism IDENT: 106878



Thermal Grizzly Hydronaut (1g)

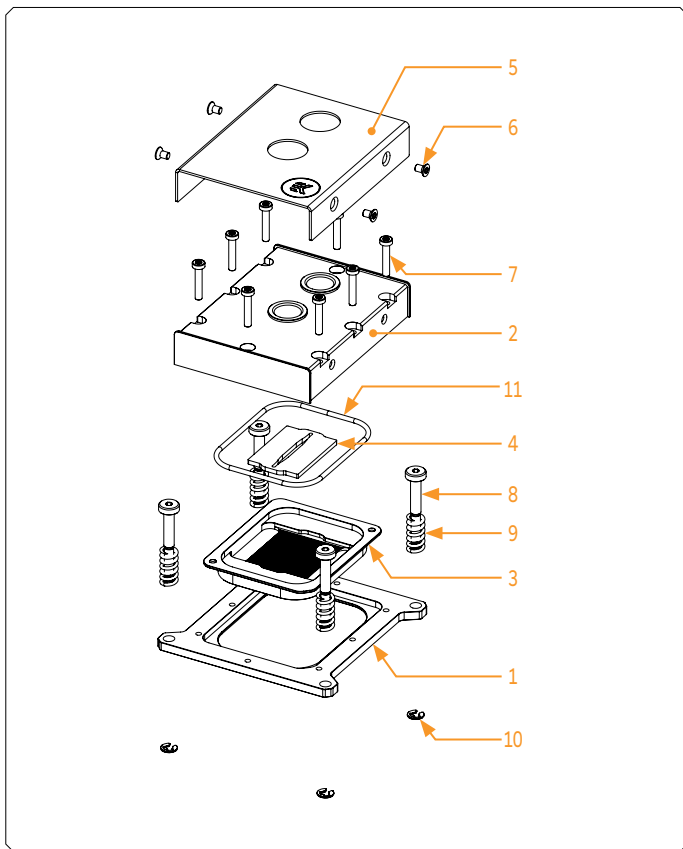


Allen Key 2.5 mm (1 pc)



EK-Pro CPU WB LGA 1700 - backplate

TECHNICAL SPECIFICATIONS AND PRODUCT PARTS



The following items are enclosed with each EK-Pro LGA 1700 water block, depending on the version: **EK-Pro LGA 1700 CPU water block**

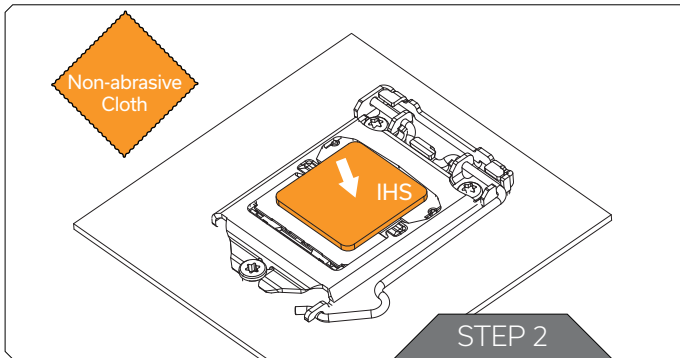
3831109903919 Ni + POM-C:

Position	EAN	Description	Quantity
1	106336	EK MOUNTING PLATE	1
2	106343	TOP ACETAL	1
3	106337	CPU COLDPLATE Nickel	1
4	106340	JET PLATE	1
5	106345	TOP COVER	1
6	103089	M3 x 5 ISO 14581 TX Screw	4
7	103103	M3 x 16 DIN 7984 TX Screw	8
8	106342	Pro CPU WB LGA 1700 Screw	4
9	8706	M4 x 16 mm 8kg (16x7.8) Spring	4
10	9033	Seegerring 3.2 DIN 6799	4
11	100365	SEALING GASKET 63 x 2 EPDM 70	1

3831109904084 Ni rack + POM-C:

Position	EAN	Description	Quantity
1	106336	EK MOUNTING PLATE	1
2	106343	TOP ACETAL	1
3	106339	CPU COLDPLATE ALU	1
4	106341	JET PLATE ALU	1
5	106345	TOP COVER	1
6	103089	M3 x 5 ISO 14581 TX Screw	4
7	103103	M3 x 16 DIN 7984 TX Screw	8
8	106342	Pro CPU WB LGA 1700 Screw	4
9	8706	M4 x 16 mm 8kg (16 x 7.8) Spring	4
10	9033	Seegerring 3.2 DIN 6799	4
11	100365	SEALING GASKET 63 x 2 EPDM 70	1

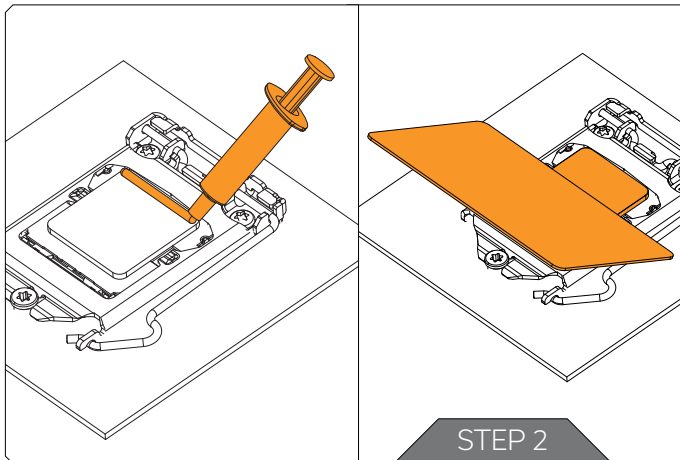
INSTALLING THE WATER BLOCK



STEP 1

CLEANING THE CPU

Wipe the CPU's contact surface (by using non-abrasive cloth or Q-tip).



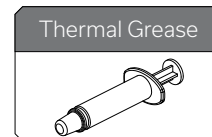
STEP 2

THERMAL COMPOUND APPLICATION

Applying thermal compound: on a clean IHS, apply a line of thermal compound and spread it over the whole CPU heat spreader (IHS) with a credit card or equivalent.

The layer of the thermal compound must be thin and even in thickness through the whole surface of the IHS. A too-thick application could lead to poor performance.

For this step, you will need:



STEP 3 INSTALLING THE WATER BLOCK ASSEMBLY



Before proceeding with the installation, it is mandatory to remove the protective foil from the backside of the water block. The CPU should be attached to the processor carrier before you start this step. The carrier typically comes with the server system or motherboard.

Make sure the processor is oriented correctly, aligning the PIN 1 corners on the socket.

First, remove the protective layer from the backplate sticker and turn the motherboard on the backside. Align the backplate with the mounting holes and gently press it there so the backplate sticks. Now turn the motherboard around and align the water block over the mounting holes on the LGA 1700 motherboard so the mounting screw sits on the backplate.

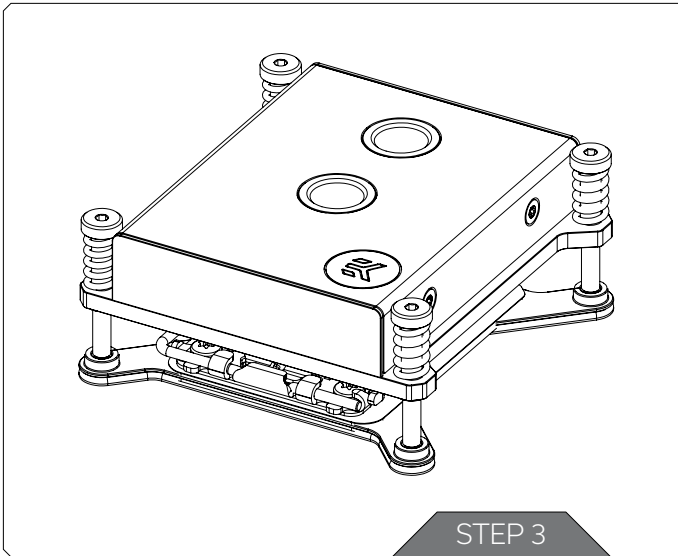


When installing the water block onto the CPU, position it so that the EKWB logo is pointing toward the lower right corner, to ensure optimal performance of the product.

Next, use a 2,5mm Allen key and tighten fasteners till the point of feeling the tightening force increases significantly.



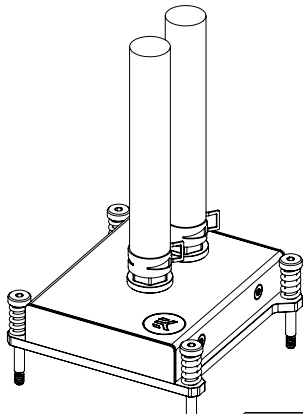
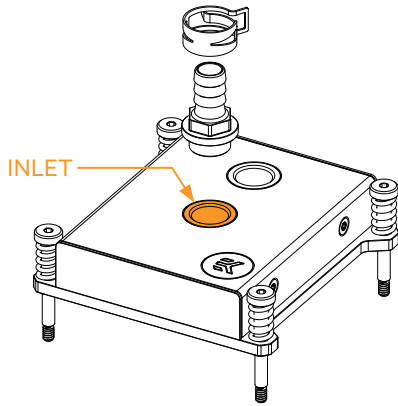
It is recommended to remove the motherboard from the PC chassis before proceeding with the installation of the processor and water block assembly because of the space constraints of different computer cases.



STEP 4 INSTALLING THE FITTINGS

Carefully identify the direction of the flow in your circuit. For the non-rack version, EK recommends the use of EK-HFB 10 mm barb fittings and EK-Tube ZMT 10/16 mm Matte Black tubing.

With EK-Pro CPU non-rack water blocks, it is mandatory to use the port in the center of the water block as the inlet port.



STEP 4

TESTING THE LOOP

To ensure the installation of EK components was successful, we recommend you perform a 24-hour leak test.

When your loop is complete and filled with coolant, connect the pump to a PSU outside your system. Do not connect power to any of the other components. Turn on the PSU and let the pump run continuously.

Inspect all parts of the loop, and in case the coolant leaks, fix the issue and repeat the testing process. To prevent possible damage, please ensure that all hardware is dry before the system is powered on.

SUPPORT AND SERVICE

In case you need assistance or wish to order spare parts or a new mounting mechanism, please contact:

<https://www.ekwb.com/customer-support/>

For spare parts orders, refer to the page with "TECHNICAL SPECIFICATIONS AND PRODUCT PARTS" where you can find the EAN number of each part you might need.


Include the EAN number with quantity in your request. Mounting Mechanism EAN can be found under "BOX CONTENTS".

Thermal pads are readily available in the EK shop.


SOCIAL MEDIA

 EKWaterBlocks

 @EKWaterBlocks

 ekwaterblocks

 EKWBofficial

 ekwaterblocks

