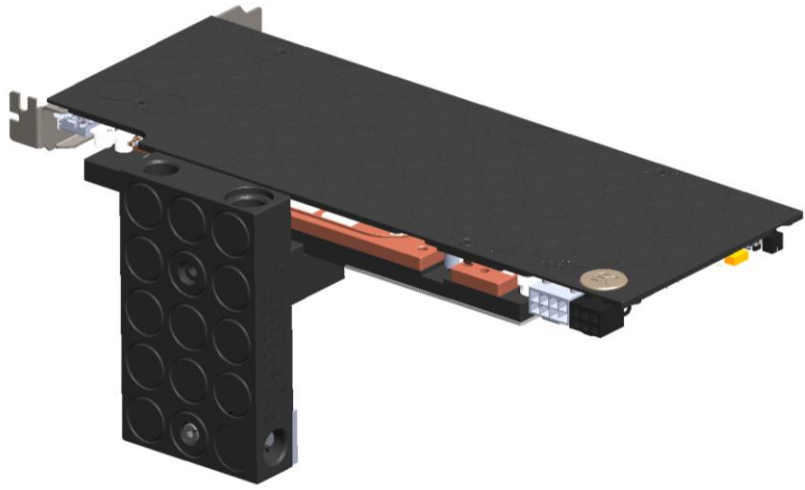


This product is intended for installation only by expert users. Please consult with a qualified technician for installation. Improper installation may result in damage to your equipment. EK Water Blocks assumes no liability whatsoever, expressed or implied, for the use of these products, nor their installation. The following instructions are subject to change without notice. Please visit our web site at www.ekwaterblocks.com for updates. Before installation of this product please read important notice, disclosure and warranty conditions published on www.ekwb.com.

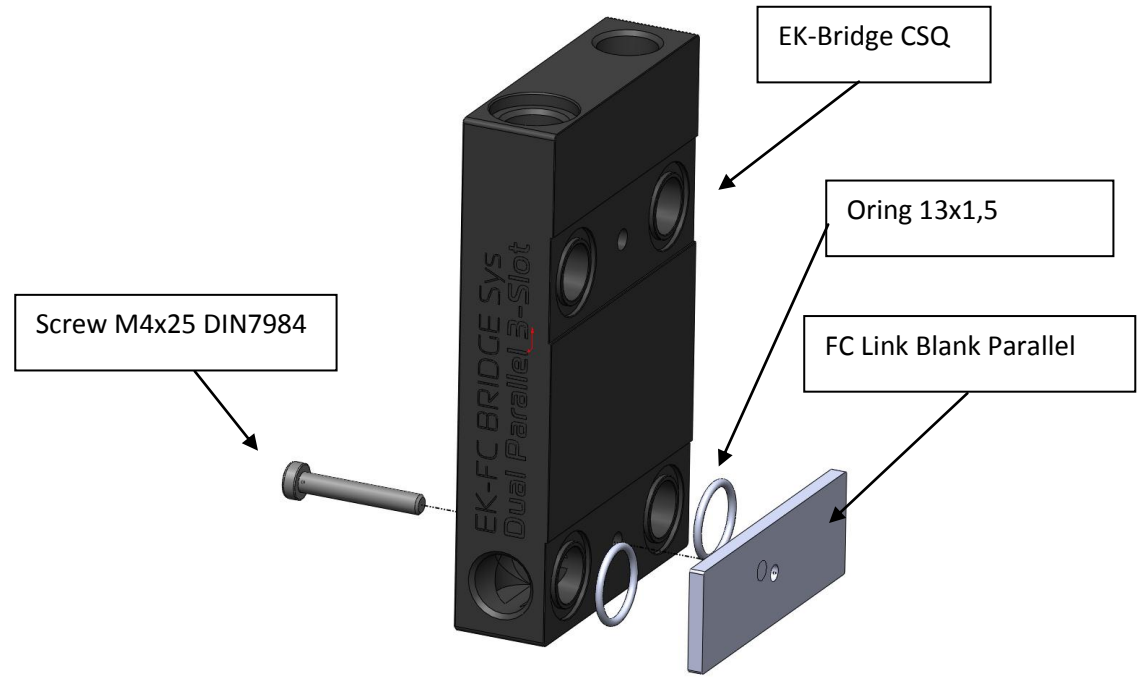
STEP 1: PREPARING YOUR HARDWARE

EK-FC Link BLANK parallel is a product ment to close the unused ports on any of EK-FC Bridge Parallel CSQ products. However, it may be replaced by an adequate EK-FC CSQ waterblock once user acquires or decides to upgrade the system.



STEP 2: ATTACHING FC Link to the EK-FC Bridge (CSQ)

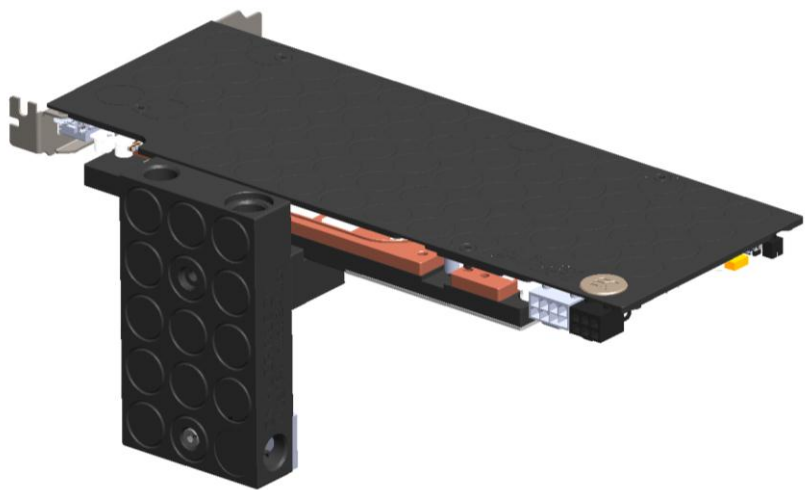
Below is sample picture of EK-FC Bridge Dual Parallel CSQ. Please do not forget to secure orings in the Bridge's groove. Make sure they are set properly and not pinched in any way. If that condition is not met a leak may occur. A M4x25 DIN7984 screw is enclosed to EK-FC Bridge.



This product is intended for installation only by expert users. Please consult with a qualified technician for installation. Improper installation may result in damage to your equipment. EK Water Blocks assumes no liability whatsoever, expressed or implied, for the use of these products, nor their installation. The following instructions are subject to change without notice. Please visit our web site at www.ekwaterblocks.com for updates. Before installation of this product please read important notice, disclosure and warranty conditions published on www.ekwb.com.

STEP 1: PREPARING YOUR HARDWARE

EK-FC Link BLANK parallel is a product ment to close the unused ports on any of EK-FC Bridge Parallel CSQ products. However, it may be replaced by an adequate EK-FC CSQ waterblock once user acquires or decides to upgrade the system.



STEP 2: ATTACHING FC Link to the EK-FC Bridge (CSQ)

Below is sample picture of EK-FC Bridge Dual Parallel CSQ. Please do not forget to secure orings in the Bridge's groove. Make sure they are set properly and not pinched in any way. If that condition is not met a leak may occur. A M4x25 DIN7984 screw is enclosed to EK-FC Bridge.

