

This product is intended for installation only by expert users. Please consult with a qualified technician for installation. Improper installation may result in damage to your equipment. EK Water Blocks assumes no liability whatsoever, expressed or implied, for the use of these products, nor their installation. The following instructions are subject to change without notice. Please visit our web site at www.ekwaterblocks.com for updates. Before installation of this product please read important notice, disclosure and warranty conditions printed on the back of the box.

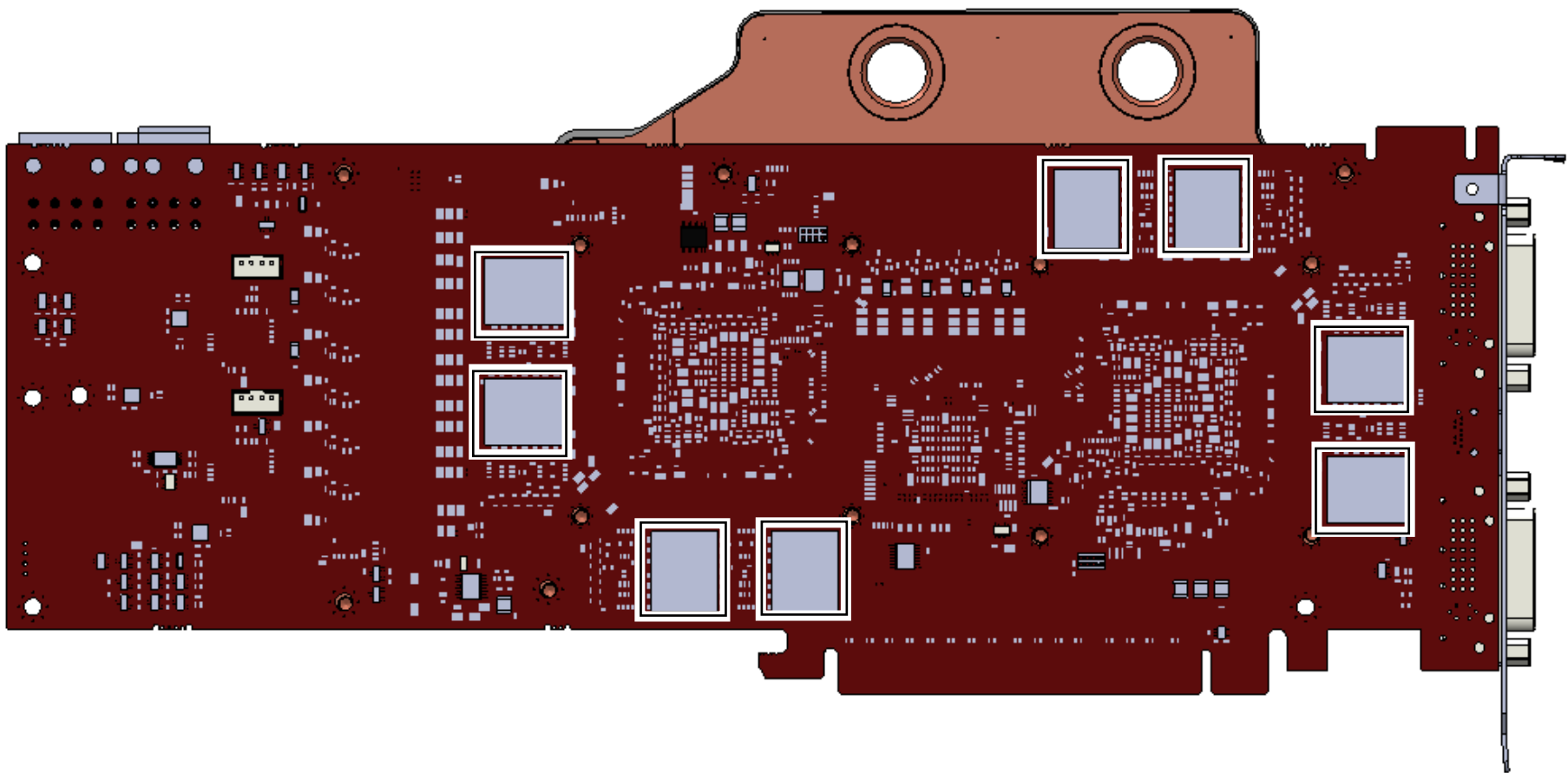
The barb hose fittings require only a small amount of force to screw them in; otherwise the high flow fittings might break. These fittings do not need to be tightened with much force because the liquid seal is made using o-rings.

STEP 1: GENERAL INFORMATION. Sample picture of RADEON HD 5970 graphic card.



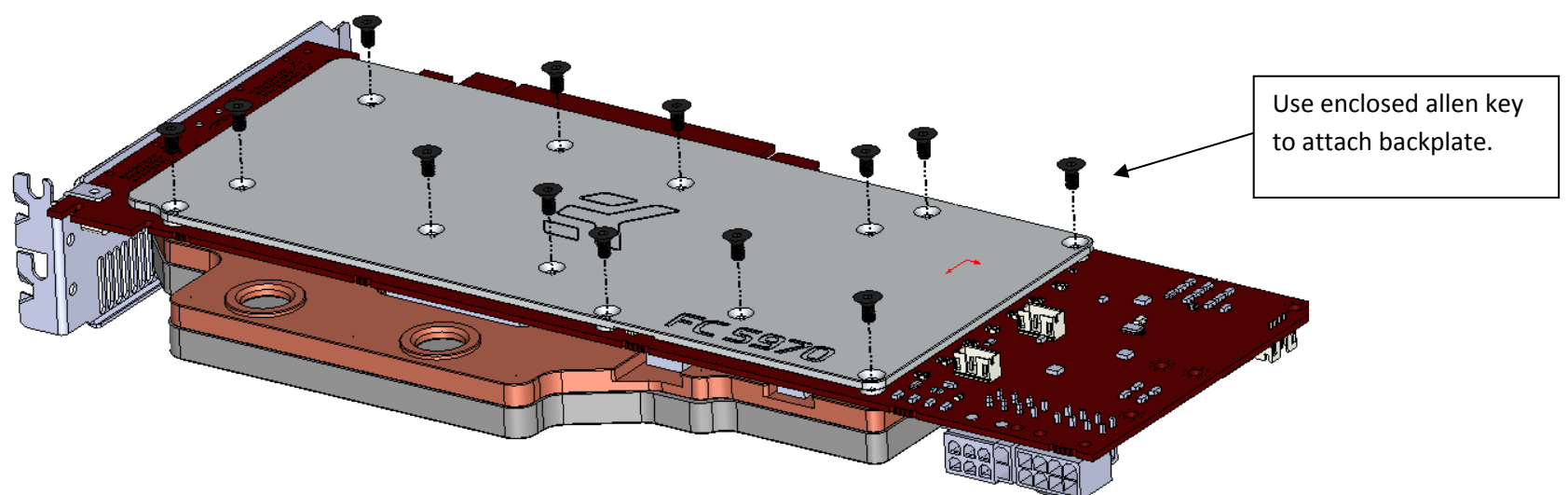
STEP 2: PREPARING YOUR GRAPHIC CARD HD 5970

1. EK-FC5970 backplate is very easy to install. Please place EK-FC5970 waterblock on PCB in a way considering all steps for mounting FC particular block. Turn around waterblock with PCB and place it on even surface. Place pre-cut thermal pads (thickness 0,5mm) on all RAMs (marked areas). You do not have to cut thermal pads as they come pre-cut.



STEP 3: ATTACHING BACKPLATE

Please note that EKWB holds no responsibility of any kind if assembly is not made by instructions. This applies also for all products that are not out of EKWB production line. Users must by all means also consider instructions that are being made for proper use of FC blocks.



REQUIRED TOOLS AND MOUNTING SCREWS:



9 x screws M3x12 7991DIN



2mm allen key