



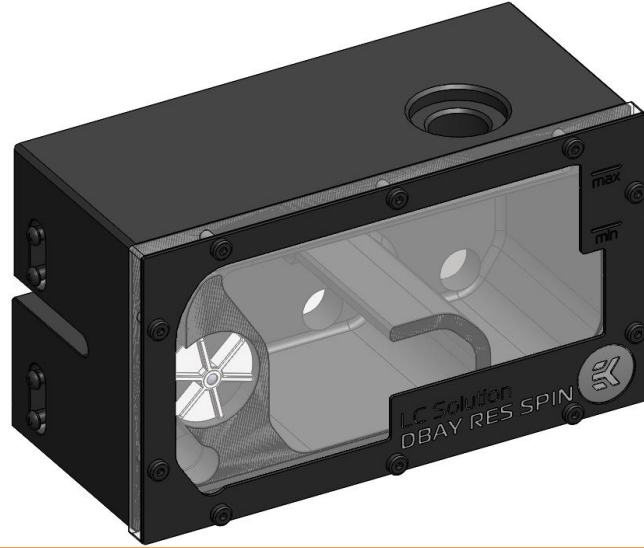
Installation and mounting manual for EK-DBAY Spin Reservoir (R3.0)

This product is intended for installation only by expert users. Please consult with a qualified technician for installation. Improper installation may result in damage to your equipment. EKWB d.o.o. assumes no liability whatsoever, expressed or implied, for the use of these products, nor their installation. The following instructions are subject to change without notice. Please visit our web site at <http://site.ekwb.com> for updates.

The barb hose fittings require only a small amount of force to screw them in; otherwise the high flow fittings might break. These fittings do not need to be tightened with much force because the liquid seal is made using o-rings.

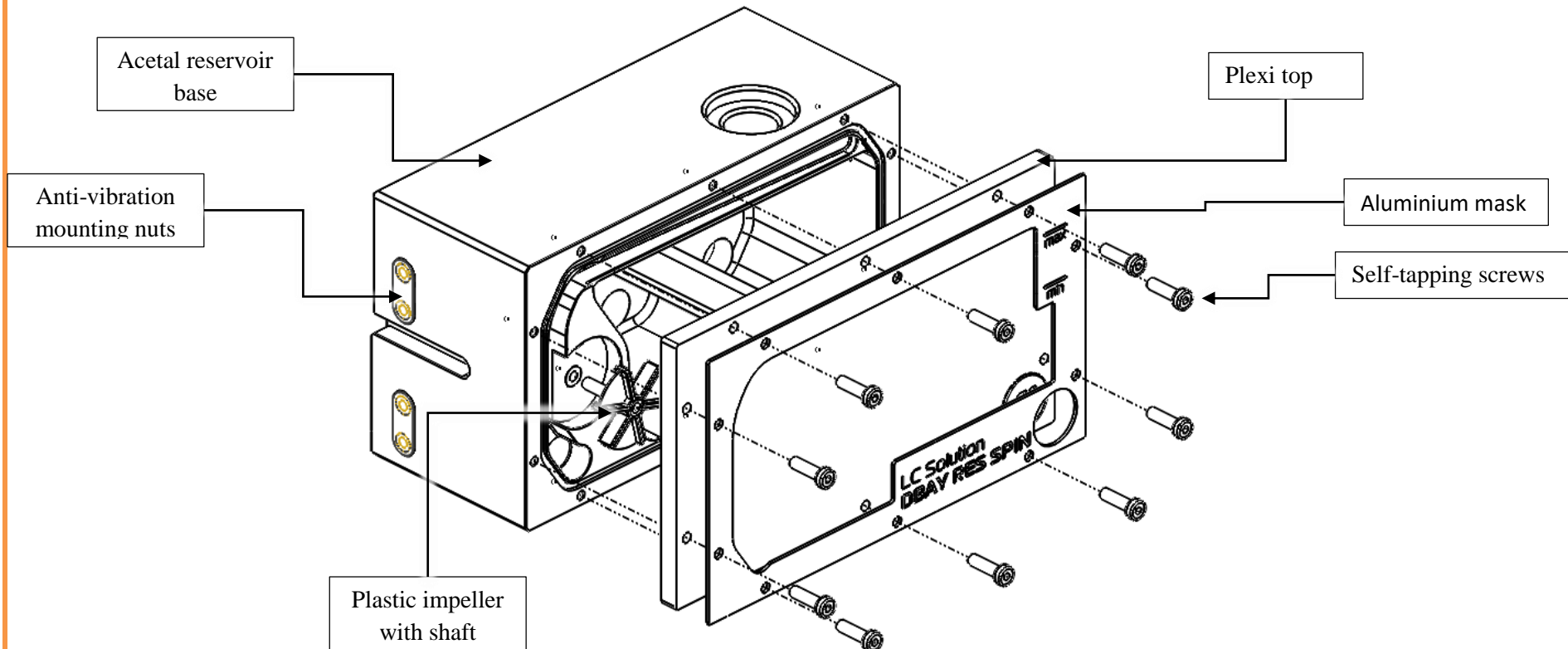
EKWB recommends 24 hour leak testing for all EK products before powering on the computer. This will eliminate any damages that may occur because of the users improper installation or products imperfections.

STEP 1: GENERAL INFORMATION. Sample picture of EK-DBAY Spin Reservoir (R3.0)



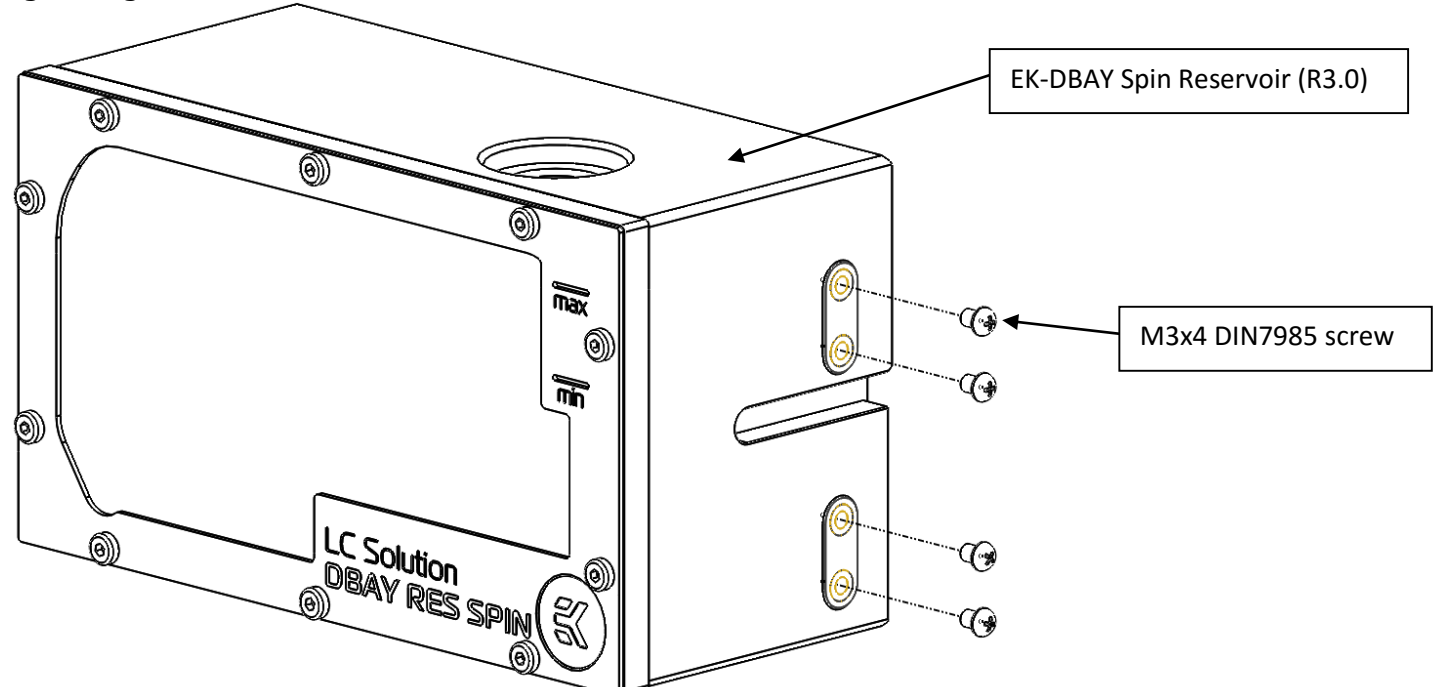
STEP 2: PREPARING YOUR RESERVOIR

Take your reservoir and place it on a flat and clean surface. In case you bought extra impellers and you wish to swap the original one then simply unscrew all screws attaching (Torx T10 key is **NOT** enclosed) the acrylic top and the aluminium mask to the base of the reservoir and replace impeller. Before closing reservoir make sure the impeller is able to rotate around its axis – the easiest way to check this is to blow air gently over the impeller's blades in order to make sure it spins flawlessly without making any kind of unusual grinding noises. If you encounter difficulties rotating the impeller please check impeller's axis shaft. When attaching the acrylic top back to the reservoir's base avoid using the excessive force since acrylic is prone to cracking. Make sure the rubber gasket is positioned inside its channel. Usually the sign of waterproof seal is when gasket flattens against the acrylic top.



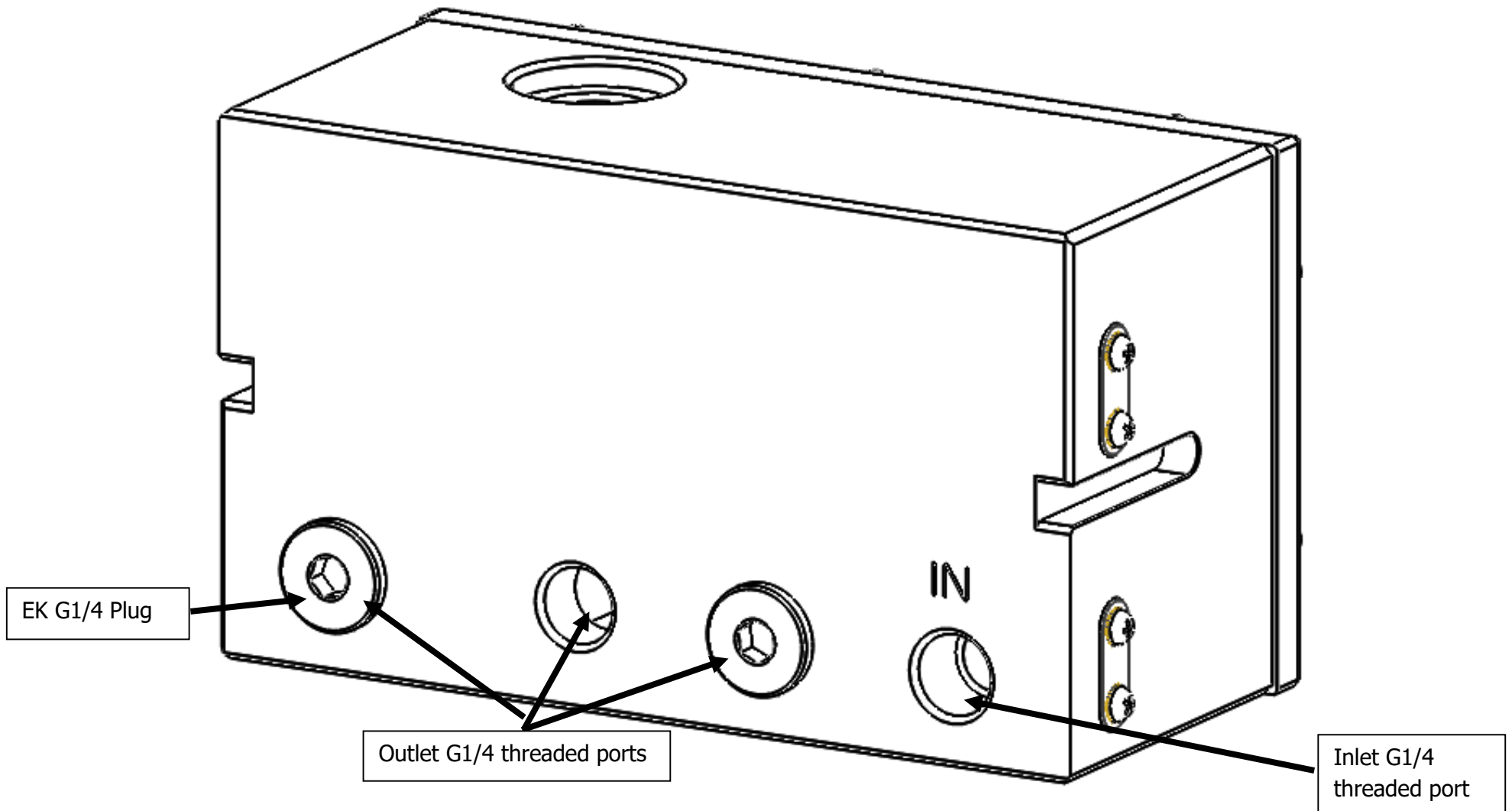
STEP 3: INSTALLING THE RESERVOIR INSIDE YOUR COMPUTER CHASSIS:

This reservoir occupies two 5.25" drive bay expansion slots in your computer chassis. Free two slots in case they are already occupied with other computer components such as optical- or hard disk drives. Place the reservoir in your 5.25" drive bay out with the front plate facing outwards. Secure the reservoir to the drive bay cage using the enclosed M3x4 DIN7985 screws.



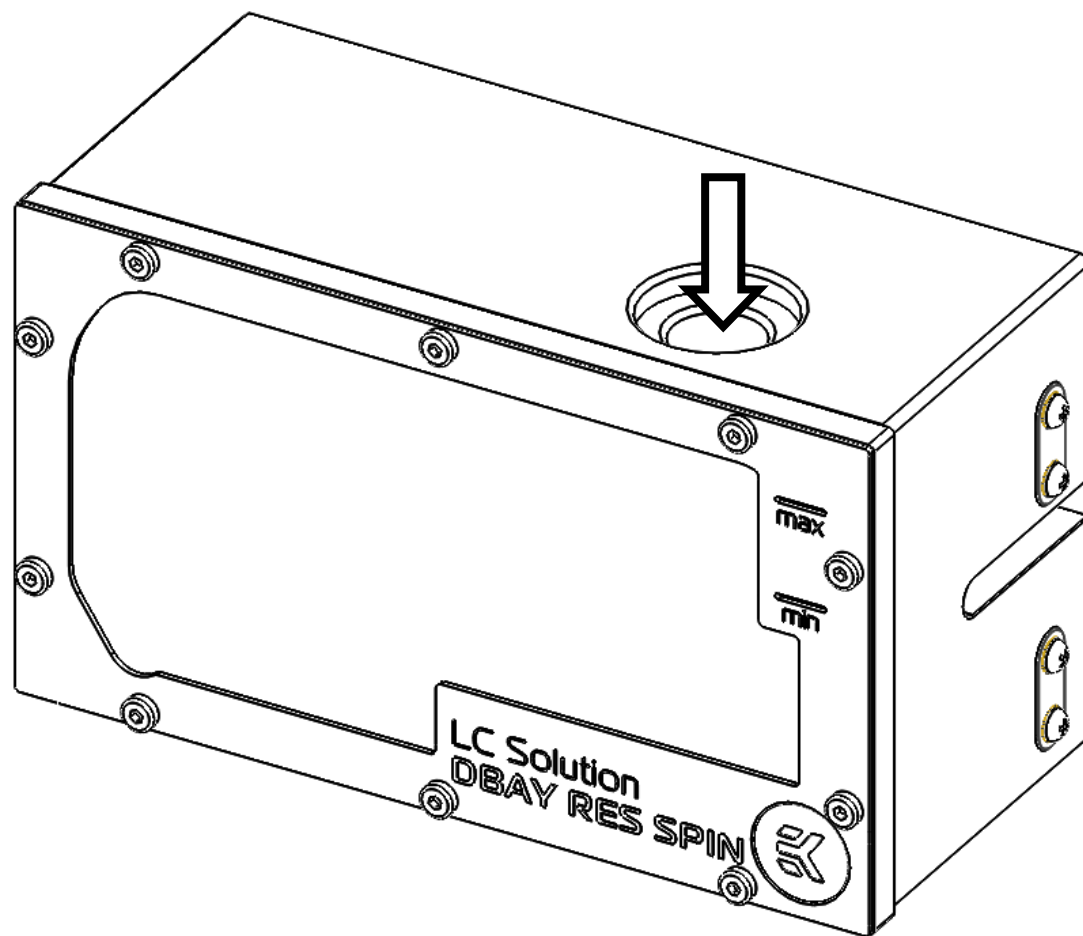
STEP 4: CONNECTING YOUR RESERVOIR

You can use any G1/4 threaded ports marked as an outlet port except for the inlet port which is clearly marked ("IN"). We recommend using the 2nd outlet port right beneath the J-shaped plastic extrusion which eases the air bleeding process significantly. Make sure unused outlet ports are plugged with enclosed plugs.



STEP 5: FILL THE RESERVOIR

Fill reservoir through G3/8 threaded fill port (marked with arrow) and make sure liquid is not spilled over your computer or any electrical devices nearby. Preferably, your pump's height level should be lower than that of the EK-DBAY Spin Reservoir in order to flood and prime the water pump. Run your pump shortly for couple of times to make sure water floods your tubes and other water cooling components. Repeat the procedure until you are done and pay attention to the water level in your reservoir. Ideally there should be only so much water to make waterfall effect still noticeable in the reservoir. Lowest and highest recommendable water levels are indicated on the reservoir's front panel (*min*, *max*). Once done with filling please close your EK-DBAY Spin Reservoir with G3/8 plug and tighten the seal using enclosed allen key.



STEP 5: OTHER INSTRUCTIONS

Please note that EKWB holds no responsibility of any kind if assembly is not performed as per instructions. This applies also for all products that are not listed as compatible on web page. Users must by all means also consider instructions that are being made for proper use of pump and other water cooling components/liquids provided by manufacturer(s).

HINT: Never let your pump running dry. Prolonged dry use enhances the risk of damaging the pump's bearing thus rendering pump useless.

