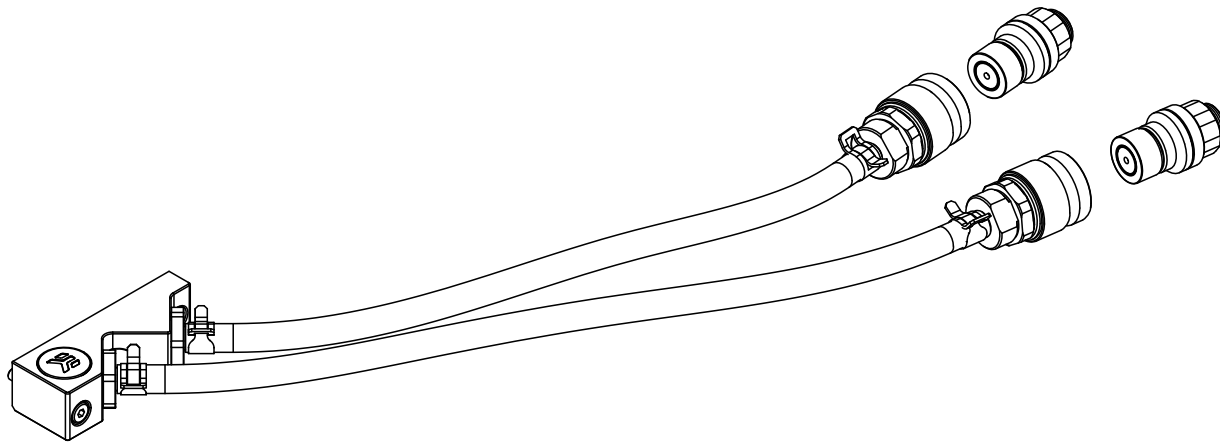


# EK-Pro GPU Quick Disconnect Kit

GPU WATER BLOCK



This product is compatible with all EK water blocks and manifolds. **It is intended for installation by expert users only.** Please consult with a qualified technician since improper installation may result in damage to the equipment. EK assumes no liability whatsoever, expressed or implied, for the use of these products, nor their installation. The following instructions are subject to change without notice. Please visit our website at [www.ekwb.com](http://www.ekwb.com) for updates. Before the installation of this product, please read important notice, disclosure, and warranty conditions printed on the back of the box.

Before you start using this product, please follow these basic guidelines:

**Carefully read the manual before beginning with the installation process.**

**Remove your graphics card from the computer for the safest mounting process and to prevent any possible damages to your GPU or its circuit board (PCB).**

**EK Fittings require only a small amount of force to screw them firmly in place since the liquid seal is ensured with the rubber O-ring gaskets.**

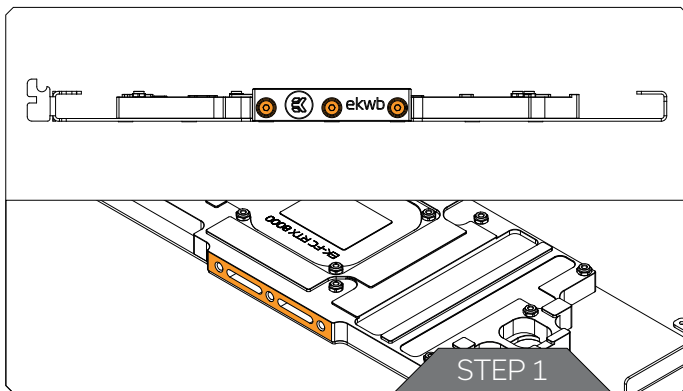
**The use of quality market-proven corrosion-inhibiting coolants is always strongly recommended for any liquid cooling system.**

**Do not use pure distilled water as a cooling liquid! For best results, EK recommends the use of EK-CryoFuel Coolants.**

# TABLE OF CONTENTS

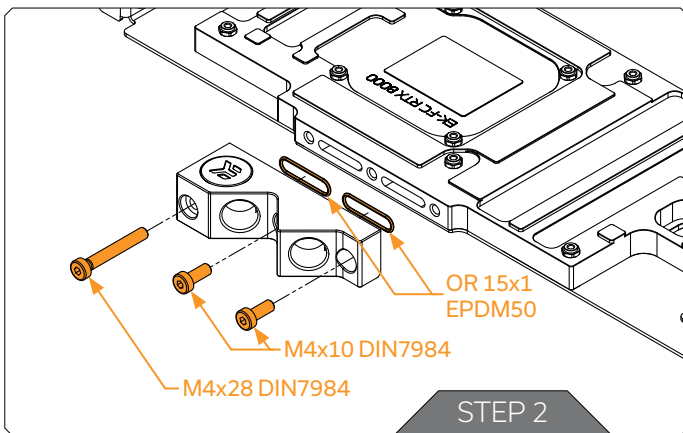
<b>PREPARING THE WATER BLOCK</b> .....	<b>4</b>
REMOVING THE TERMINAL.....	4
MOUNTING THE NEW TERMINAL.....	4
MOUNTING THE BARB FITTINGS.....	5
MOUNTING THE ZMT TUBE.....	5
MEASURING TUBES.....	6
<b>SUPPORT AND SERVICE</b> .....	<b>8</b>
<b>SOCIAL MEDIA</b> .....	<b>8</b>

## PREPARING THE WATER BLOCK



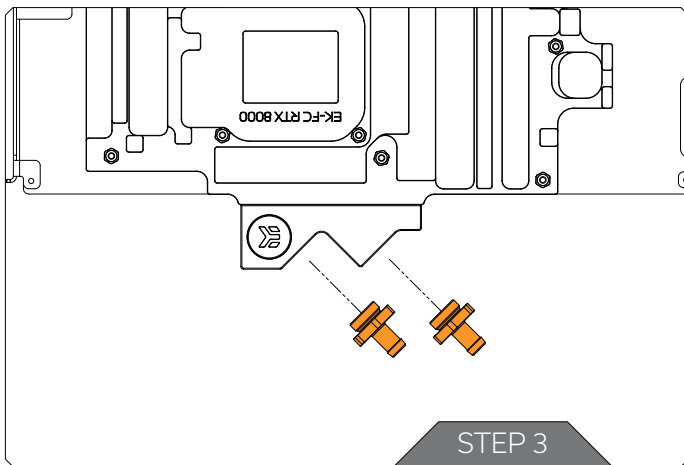
### STEP 1 REMOVING THE TERMINAL

Remove all encircled screws using the 2.5mm Allen key and clean the mounting surface of the water block with a nonabrasive cloth. EK recommends you use a dry cloth only.



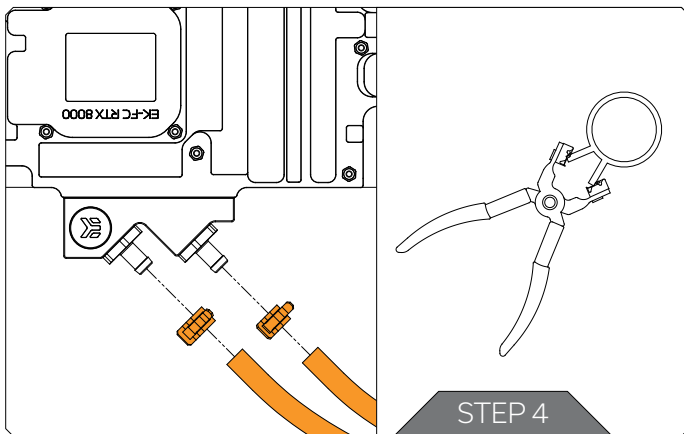
### STEP 2 MOUNTING THE NEW TERMINAL

After you have cleaned the sealing surface, assemble the terminal, as shown in the picture. Make sure that O-rings are correctly placed into terminal channels. Once the terminal is in the right position on the water block, insert and tighten the screws with a 2.5mm Allen key and apply not more than 0.5 - 0.7 Nm of torque to avoid damaging the water block. **EK recommends this installation is done by expert users only.**



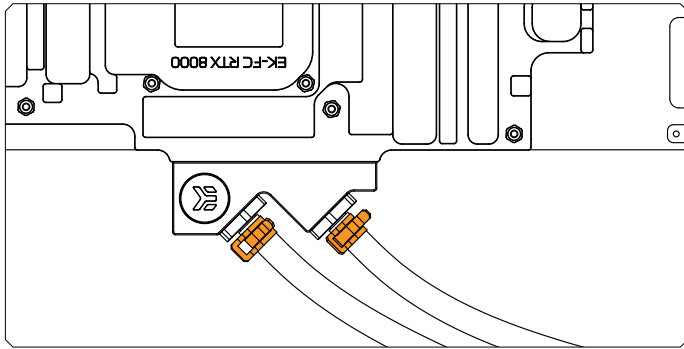
### **STEP 3 MOUNTING THE BARB FITTINGS**

Once the terminal is in the position and adequately screwed-in, screw the barb fittings into the G1/4 threaded holes. For tightening, use a fork wrench 18 with torque adjustment set to 0.8 Nm.

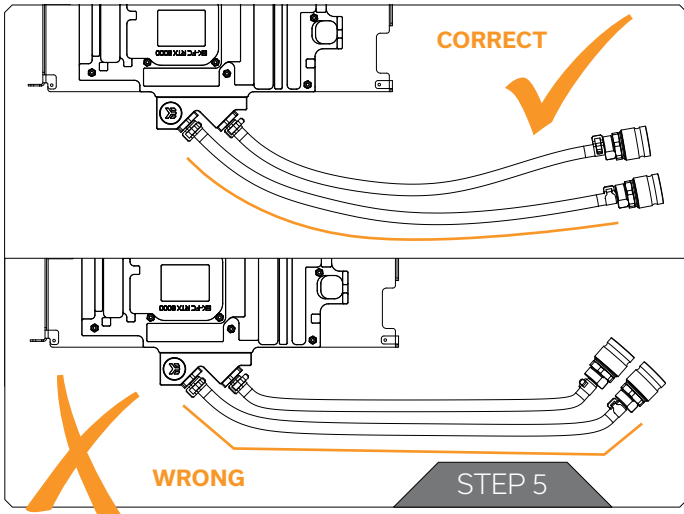


### **STEP 4 MOUNTING THE ZMT TUBE**

For proper installation of ZMT tubes and clamps, EK recommends the use of adequate hose clamp pliers.



Once the ZMT tubes and clamps are mounted, make sure they are positioned correctly (as shown in the picture).

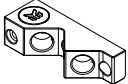
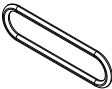



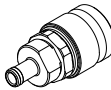



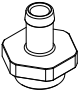


## STEP 5 MEASURING TUBES

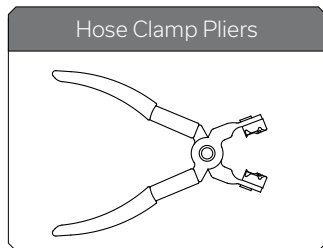
When measuring the tube length, make sure to avoid any sharp transitions of the tube to the barb fittings. Take a look at the illustration for better understanding.

## BOX CONTENTS

Check the box contents carefully. The O-rings might already be installed inside the terminal.

<p>TOP Acetal - FC Terminal M4 Pre- Filled 1 pc</p> 	<p>O-Ring OR 15x1 EPDM50 2 pcs</p> 	<p>M4x10 DIN7984 Screw 2 pcs</p> 	<p>M4x28 DIN7984 Screw 1pc</p> 	<p>QD2-MSG4 - Male QDC 2 pcs</p> 	<p>QD2-FS06-P - Female QDC 2 pcs</p> 
<p>EK-Tube ZMT 6.5/9.5 Matte Black 1,2 m</p> 	<p>2.5 mm Allen Key 1 pc</p> 	<p>Hose Clamp FSB Mini 4 pcs</p> 	<p>EK-HFB Fitting 6mm 2 pcs</p> 		

## ADDITIONAL NECESSARY TOOLS



## SUPPORT AND SERVICE

In case you need assistance, please contact:

<http://support.ekwb.com/>

EKWB d.o.o.  
Pod lipami 18  
1218 Komenda  
Slovenia - EU


## SOCIAL MEDIA

 EKWaterBlocks

 @EKWaterBlocks

 ekwaterblocks

 EKWBofficial

 ekwaterblocks

