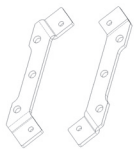


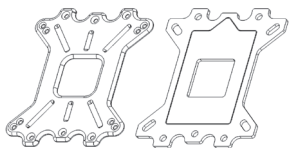
# EK-XLC Predator AMD upgrade kit

## SCOPE OF DELIVERY

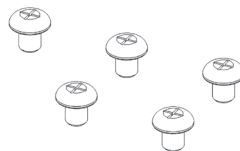
AMD mounting plate  
ADD ON for CPU block



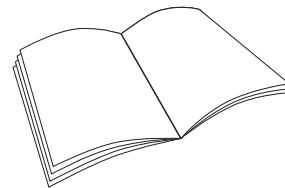
CPU Backplate mechanism



Screws M4X5

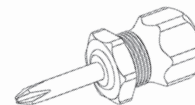


Installation manual

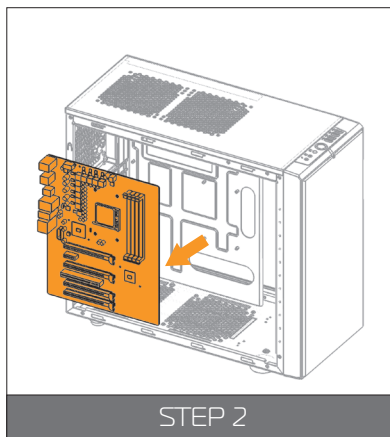
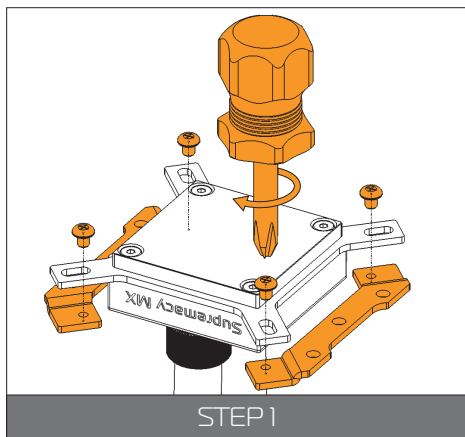


## REQUIRED TOOLS

Philips Screw driver



# INSTALLING THE WATER BLOCK



## AMD SOCKET MOTHERBOARDS

### STEP 1

Install mounting AMD bracket add-on over the Intel mounting plate. Use Philips screw driver to tighten four M4x5 DIN7985 screws to secure it.



Please note the orientation of the add-on brackets. It is mandatory to install them with raised side facing towards copper base.

### STEP 2

If already installed, please remove the motherboard from your computer and place it on an even surface with front facing up.

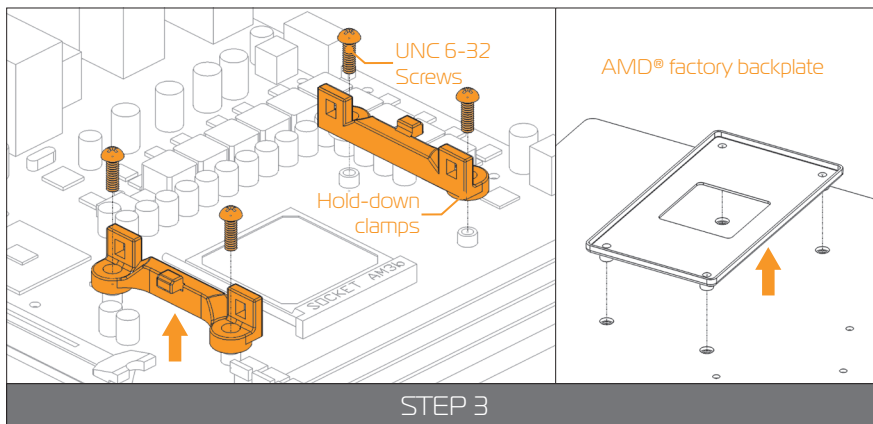
### STEP 3

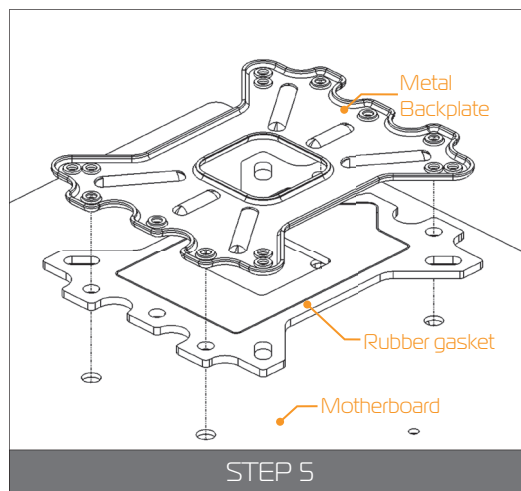
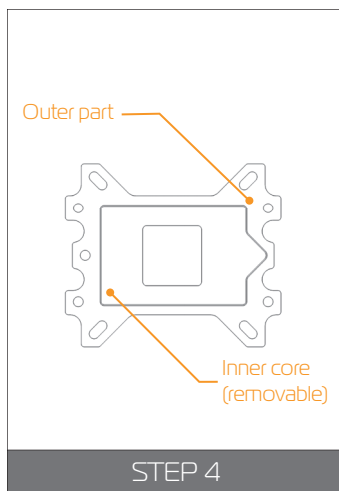
**Removing of the original plastic hold-down clamps and the factory backplate:**

Using Philips-head screwdriver remove the four UNC 6-32 screws securing the original plastic hold-down clamps around the socket as shown on the sketch. Remove the original AMD® backplate and the hold-down clamps and store them away. See sketch for further part identification.



Store away the original backplate in safe place.





## STEP 4

### Preparing backplate rubber gasket

The enclosed rubber gasket is essential part of the backplate and mounting system and must be used every time you install this water block on your motherboard.

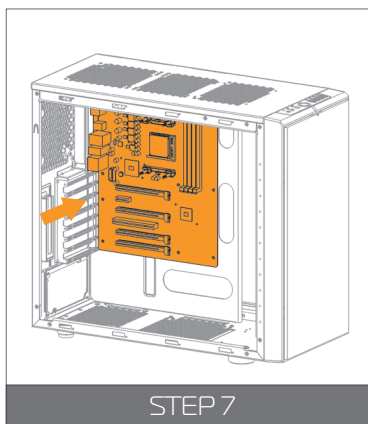
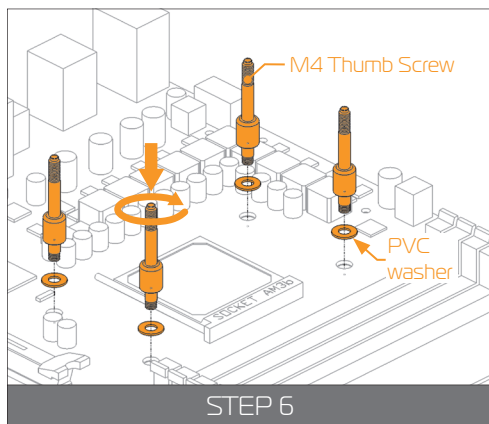


With AMD® Sockets you should use whole rubber backplate including the inner core.

## STEP 5

Install backplate rubber gasket and place metal backplate for AMD® socket to the back of your motherboard **RIBBED SIDE UP!** (facing away from the motherboard) Align the holes on the motherboard with holes on rubber gasket and backplate.

Carefully rotate motherboard assembly with front side facing up with one hand while holding the backplate and rubber in place with the other hand.

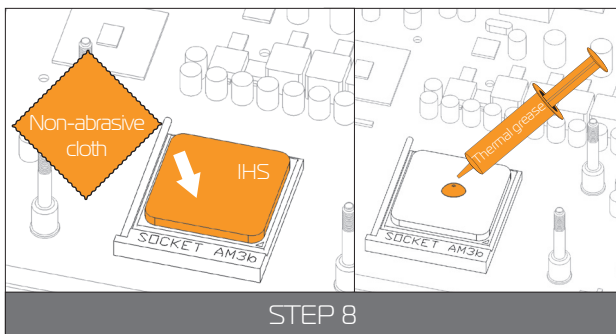


## STEP 6

Install four (4) M4 thumb screws onto your motherboard. It is mandatory to put 0.7mm plastic washer underneath each of the M4 thumb screws. Tighten the screws to the metal backplate until you reach the end of the thread. Using tools (such as pliers) is not recommended.

## STEP 7

Install the motherboard along with the thumb screws back into the computer chassis.



## STEP 8

**Cleaning the CPU:** Wipe the CPU's contact surface (by using non-abrasive cloth or Q-tip, as shown on sample photo).

**Applying thermal compound:** EK recommends blob or line method of applying the enclosed EK-TIM Ectotherm thermal compound to the CPU heat spreader (IHS) - see sample photo on right.



The quantity of about two rice grains is just about right. There is no need to cover the whole IHS. Applying too much thermal grease will have negative impact on the cooling performance!

## STEP 9

Align water block with pre-installed mounting mechanism above the AMD socket with pre-installed CPU.

Place an enclosed coiled spring and thumb nut over each M4 thumb screw. Start fastening two thumb nuts at a time, preferably in cross pattern and do not tighten them fully until all of them are partially screwed in.

Then - using your fingers only screw in all four thumb nuts until you reach the end of the thread.



Continue installation of the Predator unit by following the EK-XLC Predator installation manual.

