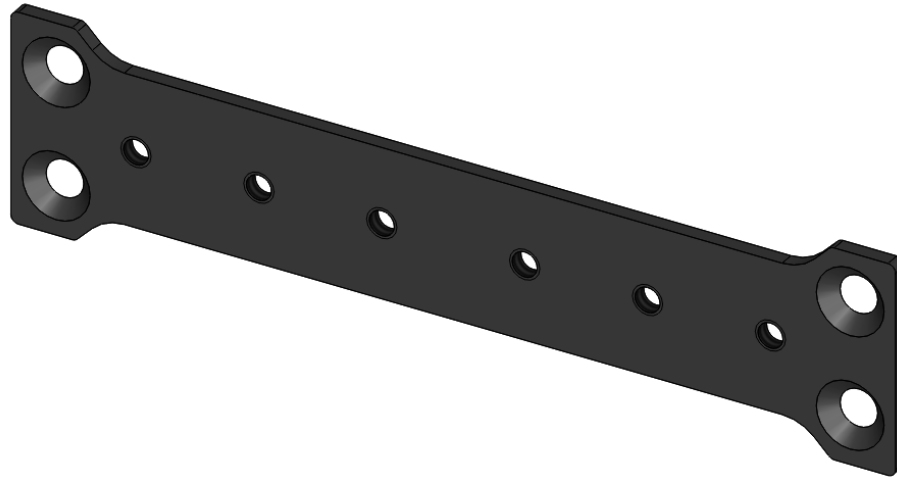


This product is intended for installation only by expert users. Please consult with a qualified technician for installation. Improper installation may result in damage to your equipment. EK Water Blocks assumes no liability whatsoever, expressed or implied, for the use of these products, nor their installation. The following instructions are subject to change without notice. Please visit our web site at www.ekwb.com for updates. Before installation of this product please read important notice, disclosure and warranty conditions printed on the back of the box.

The barb hose fittings require only a small amount of force to screw them in; otherwise the high flow fittings might break. These fittings do not need to be tightened with much force because the liquid seal is made using O-rings.

STEP 1: GENERAL INFORMATION.

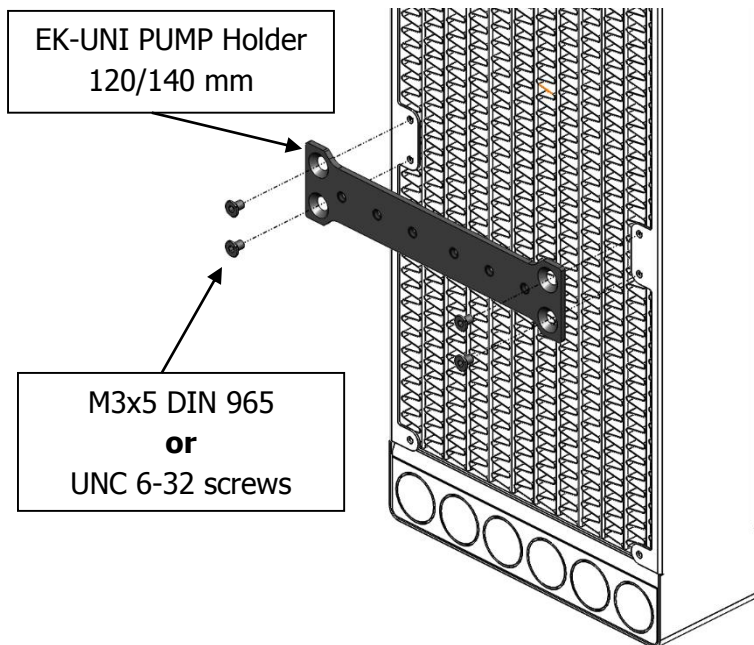
Sample picture of EK-UNI Holder 120/140 mm



STEP 2: ATTACHING THE EK-UNI PUMP HOLDER 120/140mm TO THE EK-Coolstream RADIATOR

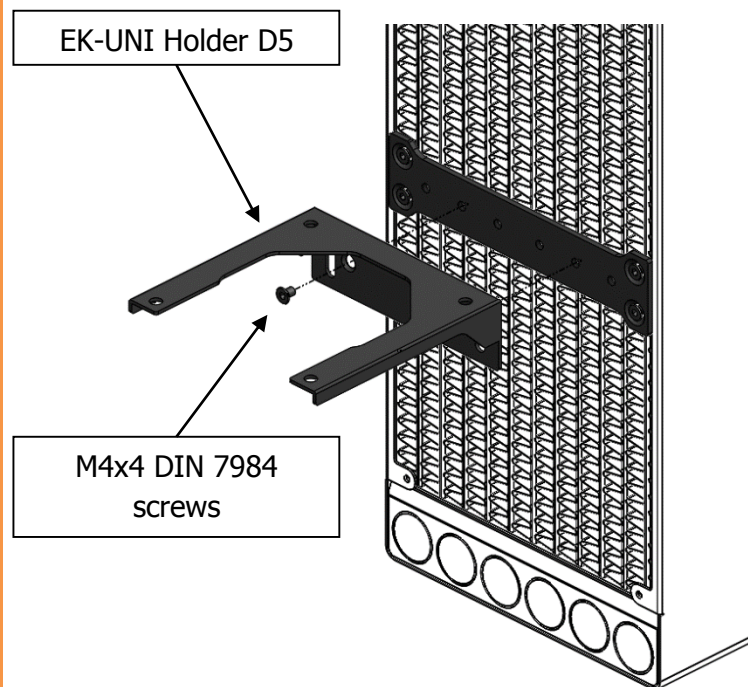
In order to use EK-UNI Pump Holder 120/140 mm your radiator needs to be installed vertically!

Attach the EK-UNI Pump Holder 120/140 mm to EK-Coolstream XT, XTX or XTC radiator using four (4) M3x5 DIN 965 or UNC 6-32 screws (it depends on fan screw threads on radiator).



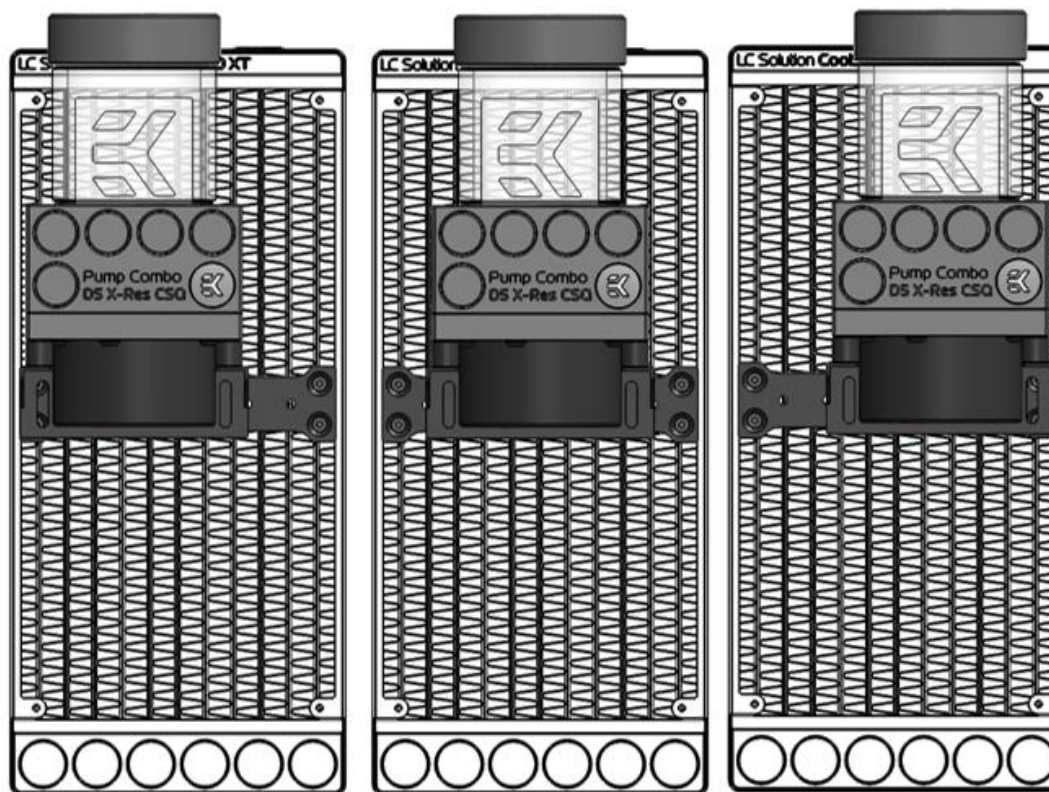
STEP 3: ATTACHING THE EK UNI Holder D5 TO THE EK-UNI PUMP HOLDER 120/140mm

Attach the EK-UNI Holder D5 using two (2) M4x4 DIN 7984 screws to the EK-UNI Pump Holder 120/140 mm with enclosed Allen key. Six (6) M4 holes in the middle of EK-UNI PUMP Holder 120/140 mm enable you to place D5 holder to different positions.



STEP 4: DIFFERENT EK-UNI Holder D5 POSITION

Three different EK-UNI Holder D5 positions are possible: left, central and right.



REQUIRED TOOLS AND MOUNTING SCREWS:



Philips head screwdriver