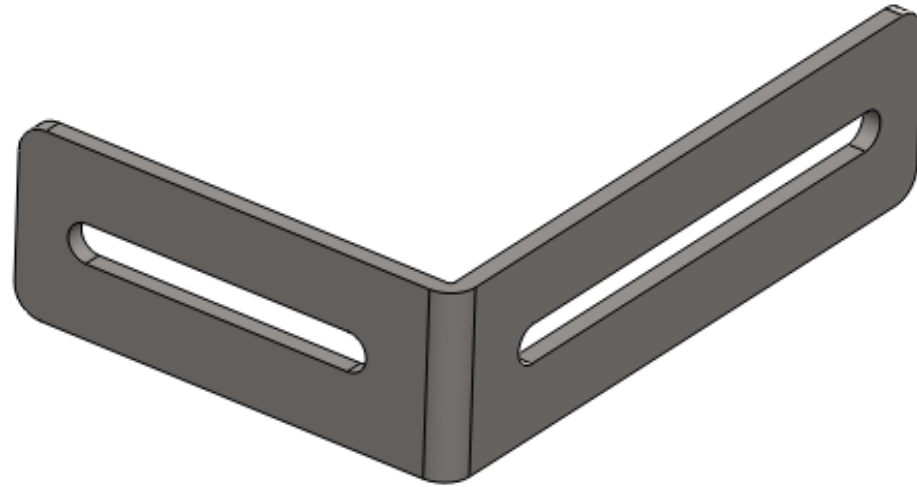


This product is intended for installation only by expert users. Please consult with a qualified technician for installation. Improper installation may result in damage to your equipment. EK Water Blocks assumes no liability whatsoever, expressed or implied, for the use of these products, nor their installation. The following instructions are subject to change without notice. Please visit our web site at www.ekwaterblocks.com for updates. Before installation of this product please read important notice, disclosure and warranty conditions printed on the back of the box.
The barb hose fittings require only a small amount of force to screw them in; otherwise the high flow fittings might break. These fittings do not need to be tightened with much force because the liquid seal is made using o-rings.

STEP 1: GENERAL INFORMATION. Sample picture of EK-UNI Holders 50/70

EKWB presents you new UNI holders that will ease up and add new installing dimensions to your PC case.



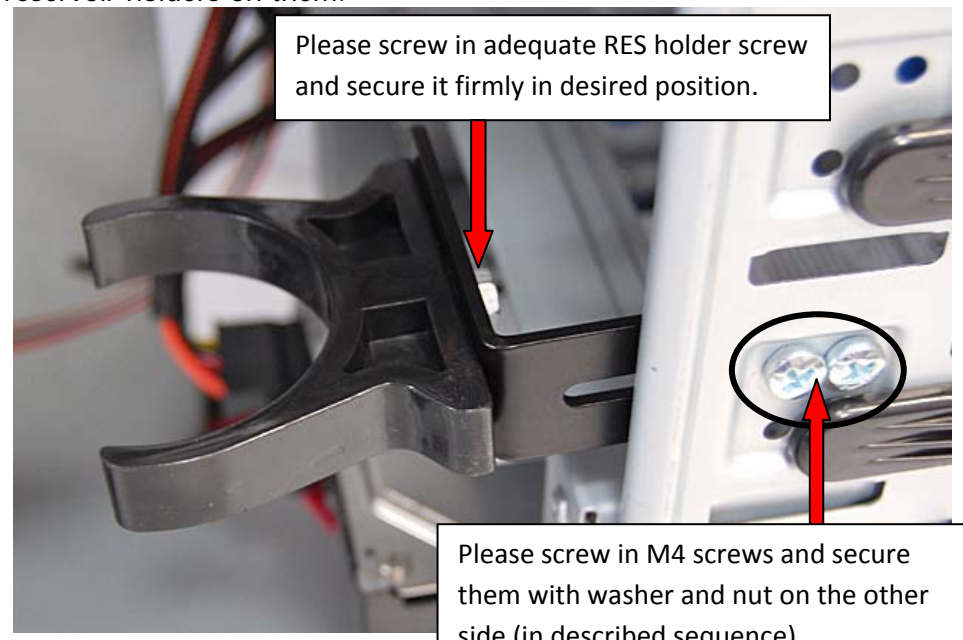
STEP 2: ATTACHING UNI HOLDERS TO PC CASE

Please look at sample picture where a UNI holder can be placed.



STEP 3: ATTACHING RESERVOIR HOLDERS ONTO UNI HOLDERS

You can install holders on 5,25" Bay cage with enclosed M4 screws and install reservoir holders on them.



STEP 4: ATTACHING RESERVOIR TO RES HOLDERS

Afterwards install reservoir upon your wishes. An oval holes of UNI Holders makes it super adjustable. Please be very careful if you possess acrylic holders as they are prone to cracking. EKWB recommends attaching fittings/barbs... prior to attaching reservoir onto holders, thus avoid putting additional stress on holders. By all means also consider manufacturers instructions for reservoir treatment and filling.



REQUIRED TOOLS AND MOUNTING SCREWS:

